



COMMUNITY CONVERSATION

Facilities Study





6:00 – 6:10 PM

Welcome & Introductions



Ethel Reeves, Director for Equity & Community Relations
Crystal Edwards, Superintendent
Amy Pugh, Deputy Superintendent
Steve Gatzke, Senior Director for Finance and Operations
Don Floyd, Director of Facilities
Rev./Dr. James Coleman, Host

- School Board Members
- City Officials
- Principals & School/Division Administrators
- School/Division Faculty & Staff
- Parents, Families & Community Members
- Students



6:10 – 6:20 PM

Goals for Tonight's Program

1. Share data from the facilities study
2. Hear your comments/feedback
3. Raise additional questions
4. Consider additional information needed
5. Post information & FAQs on the LCS website
6. Discuss next steps & timeline



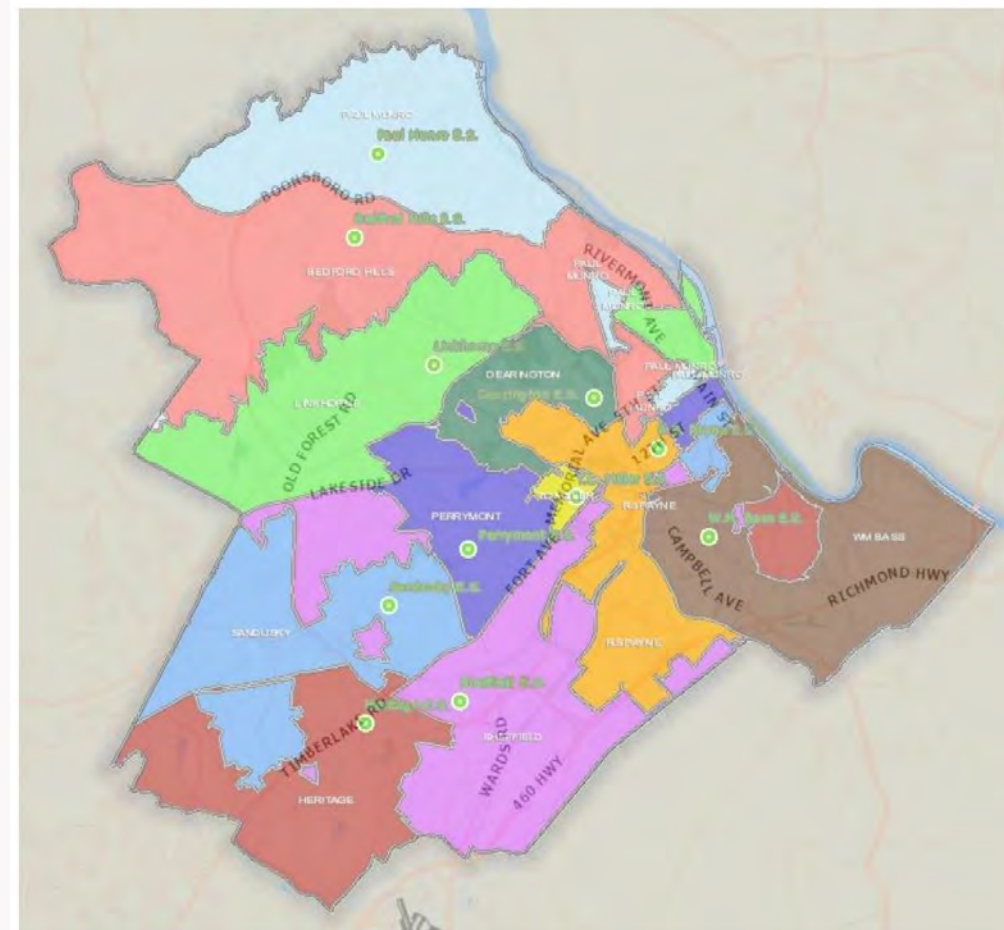


6:10 – 6:20 PM

Overview of the Facilities Study

Four Major Tasks

1. Demographics Assessment
2. Facilities Condition Assessment
3. Educational Programming
4. Recommendations

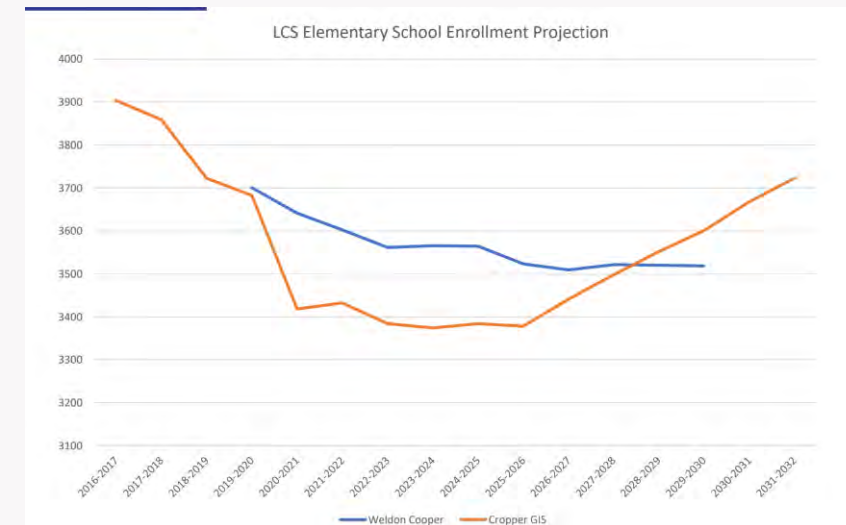




Task #1: Demographics (A & B)

Information on the Table to Review

1. Division Information – Elem School General Information
2. Map of Elementary Schools & Current Attendance Zones
3. Attendance Zone Growth
4. Capacity & Utilization Ratings
5. Exec Summary: Population & Enrollment





6:20 – 6:35 PM

Small Group Discussion – Task #1

As you review the **Demographic Information:**

1. Share your comments/feedback.
2. What questions arise?
3. What additional information is needed?



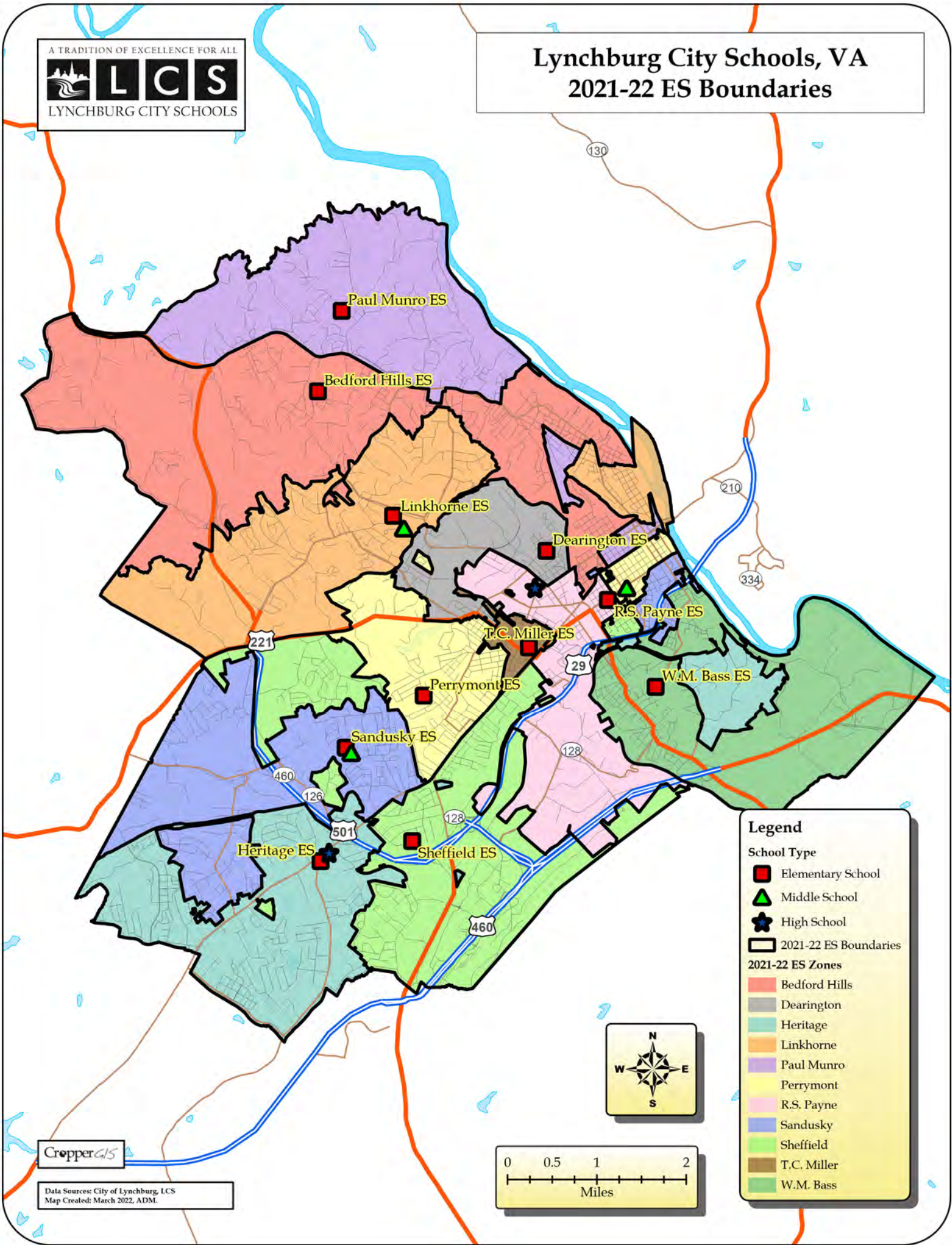
2.0 DIVISION INFORMATION – ELEMENTARY SCHOOL GENERAL INFORMATION

School	Physical Address	School Acreage	Gross School Size	Net Usable Space	Net Usable Space Efficiency	2021-2022 Enrollment	2021-2022 Functional Capacity	2021-2022 Utilization	Original Construction Date	Age	Addition(s)	Renovation(s)
Hutcherson	2401 High St.	8.7	34979	24279	69%	184	166	111%	1960	62		1974, 2007, 2013
W. M. Bass	1730 Seabury Ave.	18.4	62372	40688	65%	186	250	74%	1949	73	1963	1995 to 1999
Bedford Hills	4330 Morningside Dr.	21.5	61908	46958	76%	370	547	68%	1958	64	1992, 2020	1992
Dearington	210 Smyth St.	6.2	32270	22851	71%	144	250	58%	1927	95	1960, 1995	2000, 2015
Heritage	501 Leesville Rd.	11.6	64952	36646	56%	436	499	87%	1957	65	1964, 1993	2004
Linkhome	2501 Linkhome Dr.	10	57112	43853	77%	419	528	79%	1966	56	1971, 1988	2004
T. C. Miller	600 Mansfield Ave.	4.3	37974	24741	65%	201	276	73%	1932	90		1993
Paul Munro	4641 Locksview Rd.	9.2	44837	35297	79%	350	434	81%	1962	60	1990	1974, 2012
R. S. Payne	1201 Floyd St.	4.0	106357	62142	58%	449	625	72%	1926	96		1988 to 1996
Perrymont	409 Perrymont Ave.	33.4	58886	40939	70%	370	427	87%	1954	68	1956, 1993, 2021	1995, 2002
Sandusky	5828 Apache Ln.	10	45891	36240	79%	334	386	87%	1964	58	1967, 1975	
Sheffield	115 Kenwood Pl.	10	58710	46070	78%	442	480	92%	1960	62	2000, 2020	2000
Total		147.3	666,248	460,704		3885	4868					
Average		12.275	55521	38392	69%	324	406	80%	1951	71		

A TRADITION OF EXCELLENCE FOR ALL



Lynchburg City Schools, VA 2021-22 ES Boundaries



CropperGIS

Data Sources: City of Lynchburg, LCS
Map Created: March 2022, ADM.

5.0 CAPACITY AND UTILIZATION RATINGS

There are numerous ways in which the Functional Capacity is calculated throughout the United States. For the purpose of this study, we are using the reduced class size that LCS utilizes. Capacity and Utilization are described in 5 categories as illustrated in Scorecard Ratings chart below:

CAPACITY AND UTILIZATION SCORECARD RATINGS	
> 110%	Inadequate Space
95 - 110%	Approaching Inadequate of Space
80 - 94%	Adequate Space
70 - 79%	Approaching Inefficient Use of Space
< 70	Inefficient Use of Space

The spreadsheets on the following pages illustrate the Functional Capacity in relation to the historic, current, and projected enrollments for the school division as noted in the Demographics Report.



5.0 CAPACITY AND UTILIZATION RATINGS – ELEMENTARY SCHOOLS

School	Functional Capacity	2016-2017 Enrollment	2021-2022 Enrollment	2031-2032 Enrollment	2012-2013 Utilization	2021-2022 Utilization	2031-2032 Utilization
Hutcherson	166	NA	184	NA	NA	111%	NA
W. M. Bass	250	283	186	188	113%	74%	75%
Bedford Hills	547	486	370	405	89%	68%	74%
Dearington	250	202	144	159	81%	58%	64%
Heritage	499	483	436	485	97%	87%	97%
Linkhorne	528	478	419	453	91%	79%	86%
T. C. Miller	276	243	201	211	88%	73%	76%
Paul Munro	434	319	350	382	74%	81%	88%
R. S. Payne	625	508	449	489	81%	72%	78%
Perrymont	432	400	370	393	93%	86%	91%
Sandusky	386	351	334	339	91%	87%	88%
Sheffield	480	452	442	487	94%	92%	101%
Elementary Total	4873	4205	3885	3991	86%	80%	82%

Task #1: Demographics – Population and Enrollment Projections

Executive Summary

- Lynchburg resident fertility rates are below replacement level (10% below of the break even point)
- Most non-college migration to Lynchburg occurs in the 0 to 9 and 25 to 44 year-old age groups
- Significant numbers of the 18 to 24 year-old population is leaving the City for college or employment
- Primary reason for the enrollment decline
 - High empty nest households
 - Low number of the elderly housing units turning over for younger families
 - Flat migration rate of young families to the city
- Median age will increase from 31.0 in 2020 to 33.0 in 2030

Task #1: Demographics – Population and Enrollment Projections

Executive Summary

- The rate, magnitude, and price of existing home sales will become the increasingly dominant factor affecting the amount of population and enrollment change.
- City of Lynchburg Population
 - 2010 – 75,656
 - 2020 – 79,070 or a 4.5% increase
 - 2030 – 81,430 or a 3% increase
- Lynchburg City Schools Enrollment
 - 2010 – 8,476 (11.20% of the City's population)
 - 2020 – 7,832 or a 7.5% decline (9.905% of the City's population)
 - 2030 – 7,683 or a 1.9% decline (9.435% of the City's population)

Task #1: Demographics – Population and Enrollment Projections

Attendance Zone Growth - Increasing

- **City of Lynchburg Population**
 - **Dearington – 11.5% increase**
 - **Heritage – 10.8% increase**

- **Lynchburg City Schools Enrollment**
 - **Bedford Hills – 9.5% increase**
 - **Dearington – 10.4% increase**
 - **Heritage – 11.2% increase**
 - **Sheffield – 10.2% increase**

Task #1: Demographics – Population and Enrollment Projections

Attendance Zone Growth – Flat or Declining

- **City of Lynchburg Population**
 - William M. Bass – **12.8%** decline
 - Linkhorne – **0.2%** decline
 - T. C. Miller – **0.7%** decline
 - Perrymont – **0.2%** decline

- **Lynchburg City Schools Enrollment**
 - William M. Bass – **1.1%** increase
 - Sandusky – **1.5%** increase

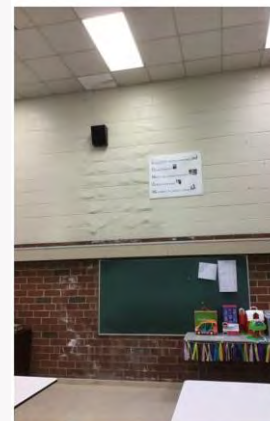


6:35 – 6:50 PM

Task #2: Facilities Condition (C,F,G &H)

Information on the Table to Review

1. Site Assessments
2. Facilities Summary
3. Facilities Assessment Scores
4. Elementary Schools' Summary





6:35 – 6:50 PM

Small Group Discussion – Task #2

As you review the **Facilities Condition Assessment:**

1. Share your comments/feedback.
2. What questions arise?
3. What additional information is needed?



Task #2: Facility Condition Assessment

Site Assessments

- Acreage
- Ingress and Egress
- Bus Circulation
- Parental Circulation
- Through Traffic
- Staff and Visitor Parking
- Playgrounds and Athletic Fields
- Ability to Expand



Task #2: Facility Condition Assessment

Facility Assessment Scores

- **Grade A: 2 Schools**
 - Heritage High School
 - Sandusky Middle School
- **Grade B: 2 Schools**
 - Sheffield Elementary School
 - E. C. Glass High School
- **Grade C+: 1 School**
 - Linkhorne Middle School
- **Grade C: 2 Schools**
 - William Marvin Bass Elementary School
 - Bedford Hills Elementary School
- **Grade C-: 4 Schools**
 - Hutcherson Early Learning Center
 - Heritage Elementary School
 - T. C. Miller Elementary School
 - Dunbar Middle School
- **Grade D: 6 Schools**
 - Dearington Elementary School
 - Linkhorne Elementary School
 - Paul Munro Elementary School
 - Robert S. Payne Elementary School
 - Perrymont Elementary School
 - Sandusky Elementary School

Task #2: Facility Condition Assessment

Facility Summary

Oldest Building

R. S. Payne

Dearington

T. C. Miller

W. M. Bass

Perrymont

Worst Condition

Sandusky

Linkhorne

R. S. Payne

Dearington

Perrymont

Lowest Capacity Utilization

Dearington

W. M. Bass

Bedford Hills

T. C. Miller

R. S. Payne

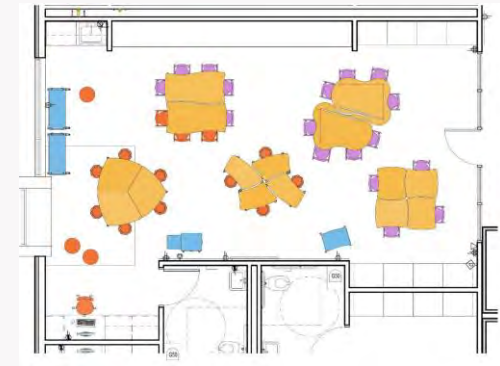


6:50 – 7:05 PM

Task #3: Educational Programming (D)

Information on the Table to Review

1. Teaching & Learning for Today and Tomorrow
2. Educational Suitability Scores





6:50 – 7:05 PM

Small Group Discussion – Task #3

As you review the **Educational Programming:**

1. Share your comments/feedback.
2. What questions arise?
3. What additional information is needed?



Task #3: Educational Programming

Teaching & Learning for Today and Tomorrow

- **Natural Light**
- **Right sized for Children**
 - **Building Size**
 - **Interior Organization**
(school within a school)
 - **Window Heights**
 - **Cabinetry**
 - **Furniture**



Task #3: Educational Programming

Teaching & Learning for Today and Tomorrow

- **Exterior Learning Areas**
 - Great in a COVID world
- **Fine Arts**
 - Undersized and under-furnished Art and Music Classrooms
- **Physical Education**
 - 6 Elementary Schools do not have Gyms
- **Food Service**
 - 5 Elementary Schools have satellite kitchens



Task #3: Educational Programming

Teaching & Learning for Today and Tomorrow

- **Extended Learning Areas**
 - Individual and Small Group Instruction
- **Security**
 - Vestibules
 - Lockdown Capability
 - Site Lines for Observation
 - Cameras



Task #3: Educational Programming

Educational Suitability Scores

- **Grade A: 2 Schools**
 - Heritage High School
 - Sandusky Middle School
- **Grade B: 3 Schools**
 - Bedford Hills Elementary School
 - Sheffield Elementary School
 - E. C. Glass High School
- **Grade C: 4 Schools**
 - Heritage Elementary School
 - T. C. Miller Elementary School
 - Perrymont Elementary School
 - Linkhorne Middle School
- **Grade C-: 5 Schools**
 - William M. Bass Elementary School
 - Dearington Elementary School
 - Linkhorne Elementary School
 - Sandusky Elementary School
 - Dunbar Middle School
- **Grade D: 3 Schools**
 - Hutcherson Early Learning Center
 - Paul Munro Elementary School
 - Robert S. Payne Elementary School



7:05 – 7:20 PM

Task #4: Propose & Evaluate 3 Options (E)

Potential Option #1 – Focus on Operational Efficiency

- **Larger and Newer Elementary Schools**
 - **Short-Term Solutions**
 - School Closing and Consolidation
 - Eliminate Leases
 - Miscellaneous Renovations
 - Attendance Zone Changes
 - **Construction of New Schools**
 - **Renovation/Addition at Some Schools**
 - Fine Arts, Gymnasium, Classrooms (to eliminate modulars)
 - **Possible Repurposing of Some Schools**
 - **Continued Maintenance Work at the Remaining Schools**





7:05 – 7:20 PM

Task #4: Propose & Evaluate 3 Options

Potential Option #2 – Middle Ground

- **Mix Larger and Smaller Elementary Schools**
 - **Short-Term Solutions**
 - School Closing and Consolidation**
 - Eliminate Leases**
 - Miscellaneous Renovations**
 - Attendance Zone Changes**
 - **Construction of a New School**
 - **Renovation/Addition at Several Schools**
 - Fine Arts, Gymnasium, Classrooms (to eliminate modulars)**
 - **Possible Repurposing of Some Schools**
 - **Continued Maintenance Work at the Remaining Schools**





Task #4: Propose & Evaluate 3 Options

Potential Option #3 – Focus on Existing Facilities

- **Less Elementary Schools, but Smaller Schools**
 - **Short-Term Solutions**
 - School Closing and Consolidation
 - Eliminate Leases
 - Miscellaneous Renovations
 - Attendance Zone Changes
 - **Construction of New Schools - none**
 - **Renovation/Addition at Multiple Schools**
 - Fine Arts, Gymnasium, Classrooms (to eliminate modulars)
 - **Possible Repurposing of Some Schools**
 - **Continued Maintenance Work at the Remaining Schools**





7:05 – 7:20 PM

Small Group Discussion – Task #4

As you review the **3 Potential Recommendations:**

1. Share your comments/feedback.
2. What questions arise?
3. What additional information is needed?



Task #4: Recommendations

Potential Option #1 – Focus on Operational Efficiency

- **Larger and Newer Elementary Schools**
 - **Short-Term Solutions**
 - School Closing and Consolidation
 - Eliminate Leases
 - Miscellaneous Renovations
 - Attendance Zone Changes
 - **Construction of New Schools**
 - **Renovation/Addition at Some Schools**
 - Fine Arts, Gymnasium, Classrooms (to eliminate modulars)
 - **Possible Repurposing of Some Schools**
 - **Continued Maintenance Work at the Remaining Schools**

Task #4: Recommendations

Potential Option #2 – Middle Ground

- **Mix Larger and Smaller Elementary Schools**
 - **Short-Term Solutions**
 - School Closing and Consolidation**
 - Eliminate Leases**
 - Miscellaneous Renovations**
 - Attendance Zone Changes**
 - **Construction of a New School**
 - **Renovation/Addition at Several Schools**
 - Fine Arts, Gymnasium, Classrooms (to eliminate modulars)**
 - **Possible Repurposing of Some Schools**
 - **Continued Maintenance Work at the Remaining Schools**

Task #4: Recommendations

Potential Option #3 – Focus on Existing Facilities

- **Less Elementary Schools, but Smaller Schools**
 - **Short-Term Solutions**
 - School Closing and Consolidation**
 - Eliminate Leases**
 - Miscellaneous Renovations**
 - Attendance Zone Changes**
 - **Construction of New Schools - none**
 - **Renovation/Addition at Multiple Schools**
 - Fine Arts, Gymnasium, Classrooms (to eliminate modulars)**
 - **Possible Repurposing of Some Schools**
 - **Continued Maintenance Work at the Remaining Schools**

Dearington Elementary School

210 Smyth Street, Lynchburg, VA 24501

Current Enrollment: 146 students
Functional Capacity: 292 students
Grades Served: Kindergarten to 5th grade

Facility Timeline:

1927 = Original Building
1960 = Addition
1995 = Addition
2000 = HVAC Replacement
2015 = Renovation (Lights + Ceilings)
2018 = Partial Reroof

Gross Area: 32,270 square feet

Acreage: 6.2



Dearington Elementary School for Innovation (DESI) is located within the Dearington neighborhood. The school has been added onto and renovated over the years, with most areas being refurbished as well as the addition of an elevator. Roofing has recently been replaced along with new LED lighting and ceilings throughout the facility. Dearington is one of three Innovation Centers in the Division. All of the Innovation Centers pull a percentage of students from the surrounding neighborhoods with the remaining student population being filled through a voluntary lottery system from across the Division. This building is a two-story structure except for the original portion, which is only 1- story. There is no gym, so the cafeteria space is shared for movement education on days with inclement weather.

Principal: Kelly Bivens

School Motto: Be the Change You Want to See in the World - *Gandhi*



Dearington Elementary School

Grades Served:	Kindergarten to 5 th grade
Specialty School:	School of Innovation focusing on STEM and Spanish
Total Net Area:	22,851 square feet or 70.8%
Gross Area:	32,270 square feet
Total Number of Core Classrooms:	12
Support Spaces:	<ul style="list-style-type: none">• Media Center• Cafeteria/Gymnasium with Stage

SUMMARY:

The Core Classrooms serving the grade levels are undersized and do not meet the minimums of the Virginia Department of Education. The school does not have any Extended Learning Areas for small group or individual instruction. There are numerous support personnel working out of this school that are utilizing potential instructional space. The Fine Art classrooms (Art and Music) are located in a modular building which should be replaced with a permanent structure. The school does not have a Gymnasium, but the Dining Room is ample in size in relation to the enrollment. The school has a satellite Kitchen which should be replaced with fully functioning Kitchen. The Administrative suite is undersized.

CAPACITY TO EXPAND:

The school occupies a city block and is landlocked. Expansion is not possible without acquiring additional land for site amenities (parking).



Dearington Elementary

	2016-17	2017-18	2018-19	2019-20	2020-21	2021-22	2022-23	2023-24	2024-25	2025-26	2026-27	2027-28	2028-29	2029-30	2030-31	2031-32
PK	8	6	7	9	5	1	1	1	1	1	1	1	1	1	1	1
K	38	23	30	22	27	26	26	27	27	28	27	28	28	29	29	28
1	38	35	27	25	27	21	24	24	25	25	26	26	27	27	28	28
2	28	34	36	24	26	24	20	23	23	24	24	25	25	26	26	27
3	33	31	33	27	25	16	23	19	22	22	23	23	24	24	25	25
4	25	33	34	29	33	26	17	24	20	23	23	24	24	25	25	26
5	32	21	37	33	26	30	24	16	23	19	22	22	23	23	24	24
Total	202	183	204	169	169	144	135	134	141	142	146	149	152	155	158	159

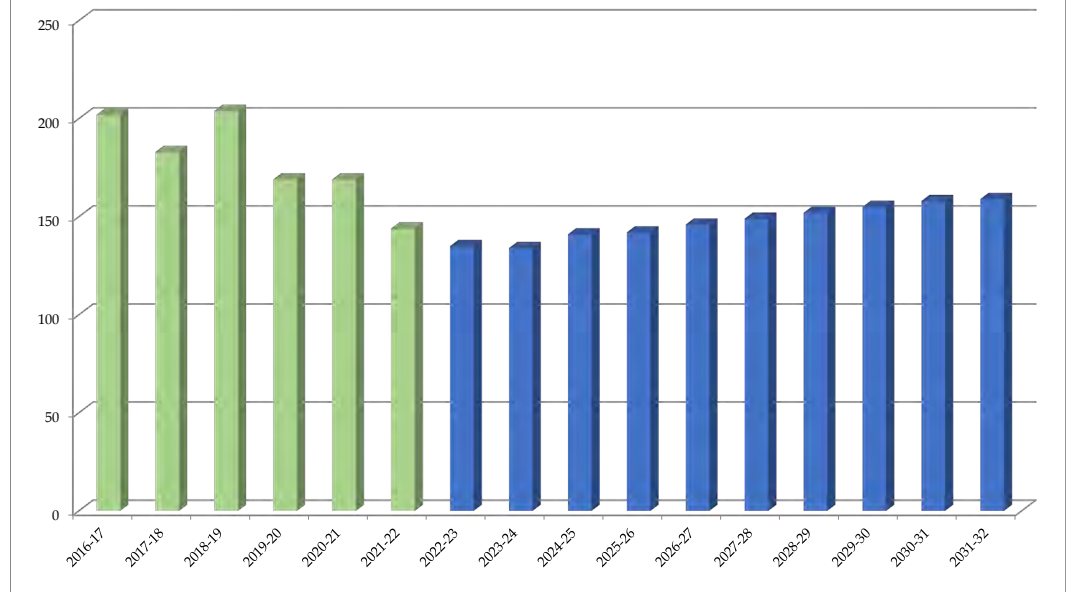
Total: Elementary	202	183	204	169	169	144	135	134	141	142	146	149	152	155	158	159
Change		-19	21	-35	0	-25	-9	-1	7	1	4	3	3	3	3	1
Percent Change		-9.4%	11.5%	-17.2%	0.0%	-14.8%	-6.3%	-0.7%	5.2%	0.7%	2.8%	2.1%	2.0%	2.0%	1.9%	0.6%

Forecasts developed March 2022

Green cells (2016-2021 and earlier) are historical data

Blue cells (2022-2032 and later) are forecasted years

Dearington Elementary School: PK-5 Total Enrollment



Lynchburg City Schools, VA Dearington Elementary School 2021-22 Student Density Analysis

Dearington	
Total Enrollment (K-5th)	143
Out of District	0
Unmatched	0
Total Live-In (K-5th)	104
Live and Attend In	79
Live Out, Attend In	64
Live In, Attend Out	25

Legend

School Type

- Elementary School
- Middle School
- High School
- 2021-22 ES Boundaries

2021-22 ES Zones

- Bedford Hills
- Dearington
- Heritage
- Linkhorne
- Paul Munro
- Perrymont
- RS Payne
- Sandusky
- Sheffield
- TC Miller
- WM Bass

Student Density (Quantile Classification)

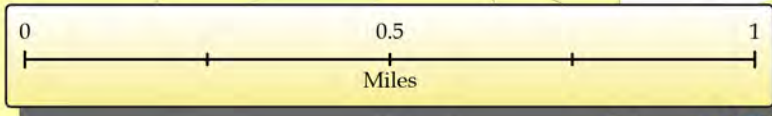
- 34 - 41
- 19 - 33
- 15 - 18
- 12 - 14
- 11
- 10
- 9
- 8
- 7
- 6

Linkhorne ES

Dearington ES

501

221



Map Note: Concentration represents counts of students within an eighth-mile radius. Concentrations of less than 6 students are excluded.



Data Sources: City of Lynchburg, LCS
 Map Created: March 2022, ADM.

Heritage Elementary School

501 Leesville Road, Lynchburg, VA 24502

Current Enrollment: 404 students
Functional Capacity: 584 students
Grades Served: Kindergarten to 5th grade

Facility Timeline:

1957 = Original Building
1964 = Addition
1993 = Addition
2002 = Cafeteria HVAC
2004 = Renovation
2015 = Switchboard
2020 = Reroof (Partial)

Gross Area: 64,952 square feet

Acreage: 11.6

Heritage Elementary School is located on a very prominent corner site at the intersection of Leesville and Timberlake Roads. Heritage is adjacent to Heritage High School and is a one-story structure. There is no gym on site. This school has been added on to and renovated several times, however, a full-building renovation has not been done at this point. Most of the school has been renovated at some point, however, some of the school is of the original 1957 construction. Due to site constraints, there is no room for an addition, gym or adding parking at this current site, as it is land locked on all sides.

Principal: Sharon Anderson



Heritage Elementary School

Grades Served: Kindergarten to 5th grade

Specialty School: No

Total Net Area: 36,646 square feet or 56.4%

Gross Area: 64,952 square feet

Total Number of Core Classrooms: 24

Support Spaces:

- Media Center
- Cafeteria with Stage

SUMMARY:

Overall, the school is an inefficient design due to the area of corridors in relation to the total usable space. The Core Classrooms serving the grade levels are slightly undersized and does not have any Extended Learning Areas for small group or individual instruction. The Fine Art classrooms (Art and Music) are 45% smaller than the VDOE guidelines. The school does not have Gymnasium, which is a major need. Finding an appropriate location for a new Gym on the site will be difficult. The size of the Kitchen is one of the best in the division. The Administrative suite is sufficient in size.

CAPACITY TO EXPAND:

The school is landlocked between two city streets and Heritage High School and would be very difficult to increase in size.



Heritage Elementary

	2016-17	2017-18	2018-19	2019-20	2020-21	2021-22	2022-23	2023-24	2024-25	2025-26	2026-27	2027-28	2028-29	2029-30	2030-31	2031-32
PK	51	60	63	45	37	41	41	41	41	41	41	41	41	41	41	41
K	81	77	103	87	72	73	73	73	74	76	76	77	78	79	81	80
1	80	90	85	93	83	71	75	76	76	77	78	78	79	80	81	83
2	80	84	79	77	77	74	66	70	71	71	72	73	73	74	76	77
3	59	80	73	66	56	66	67	60	64	65	65	66	67	67	69	71
4	78	63	80	70	54	53	63	64	58	62	63	63	64	65	66	68
5	54	75	55	69	71	58	51	61	62	57	61	62	62	63	64	65
Total	483	529	538	507	450	436	436	445	446	449	456	460	464	469	478	485

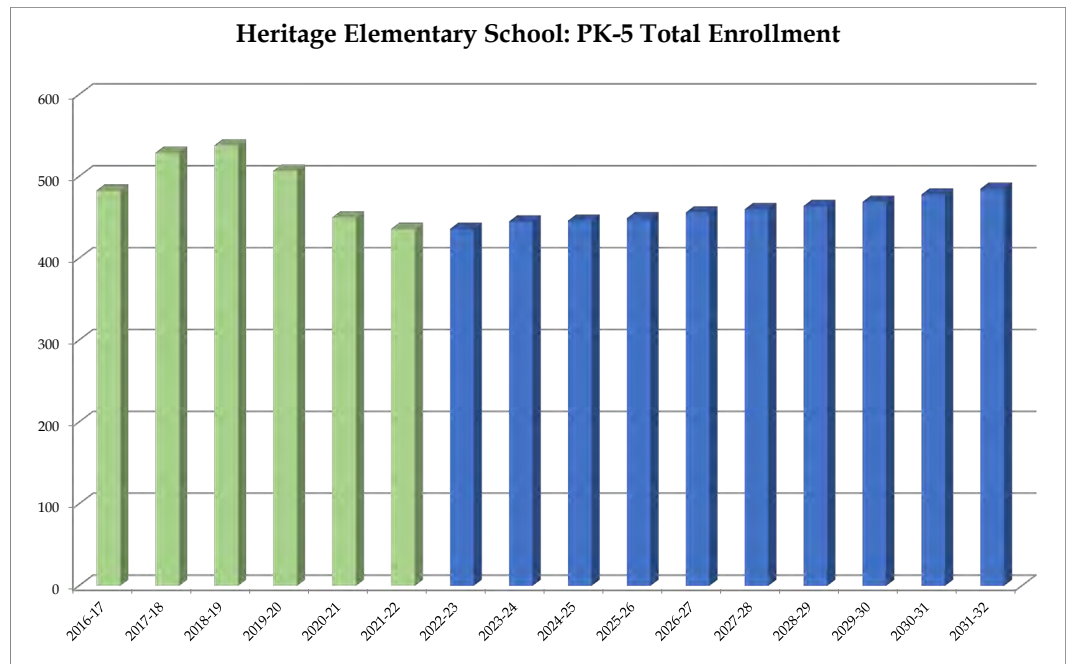
Total: Elementary	483	529	538	507	450	436	436	445	446	449	456	460	464	469	478	485
Change		46	9	-31	-57	-14	0	9	1	3	7	4	4	5	9	7
Percent Change		9.5%	1.7%	-5.8%	-11.2%	-3.1%	0.0%	2.1%	0.2%	0.7%	1.6%	0.9%	0.9%	1.1%	1.9%	1.5%

Forecasts developed March 2022

Green cells (2021-2022 and earlier) are historical data

Blue cells (2022-2023 and later) are forecasted years

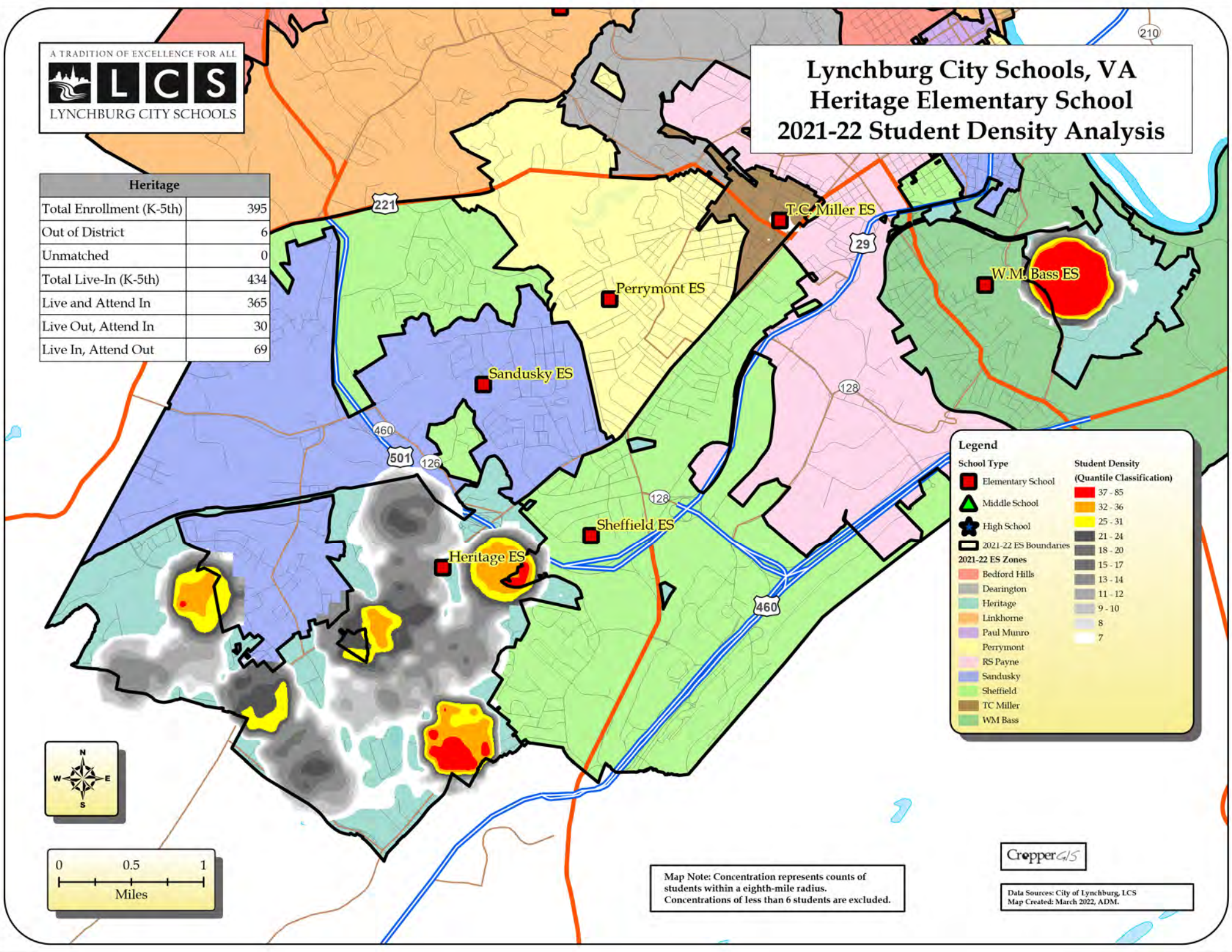
Heritage Elementary School: PK-5 Total Enrollment





Lynchburg City Schools, VA Heritage Elementary School 2021-22 Student Density Analysis

Heritage	
Total Enrollment (K-5th)	395
Out of District	6
Unmatched	0
Total Live-In (K-5th)	434
Live and Attend In	365
Live Out, Attend In	30
Live In, Attend Out	69



Legend

School Type

- Elementary School (Red square)
- Middle School (Green triangle)
- High School (Blue star)

2021-22 ES Boundaries (Black outline)

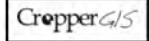
2021-22 ES Zones

- Bedford Hills (Light red)
- Dearington (Light grey)
- Heritage (Light blue)
- Linkhome (Light orange)
- Paul Munro (Light purple)
- Perrymont (Light yellow)
- RS Payne (Light pink)
- Sandusky (Light blue)
- Sheffield (Light green)
- TC Miller (Light brown)
- WM Bass (Light green)

Student Density (Quantile Classification)

- 37 - 85 (Red)
- 32 - 36 (Yellow)
- 25 - 31 (Orange)
- 21 - 24 (Dark grey)
- 18 - 20 (Medium grey)
- 15 - 17 (Light grey)
- 13 - 14 (Very light grey)
- 11 - 12 (White)
- 9 - 10 (Very light grey)
- 8 (White)
- 7 (White)

Map Note: Concentration represents counts of students within an eighth-mile radius. Concentrations of less than 6 students are excluded.



Data Sources: City of Lynchburg, LCS
Map Created: March 2022, ADM.

Bedford Hills Elementary School

4330 Morningside Drive, Lynchburg, VA 24503

Current Enrollment: 371 students
Functional Capacity: 483 students
Grades Served: Kindergarten to 5th grade

Facility Timeline:

1958 = Original Building
1992 = Fire / Renovation / Addition
2007 = New Roof
2012 = Window Replacement – Cafeteria / Kitchen
2017 = New Parking Lot
2020 = New Gymnasium

Gross Area: 61,908 square feet

Acreage: 21.5

Bedford Hills Elementary School is located in the Boonsboro area of the City. This facility suffered heavy damage after a fire in the early 1990's. Afterward, a new wing was constructed to replace the fire damaged area and increase the student capacity of the school. Though the new wing was constructed, the remainder of the school was not fully renovated and the focus of the renovation at that time was the connection back to the existing building. Mobile classrooms were also added during the 1990's and contain (4) classrooms and toilet facilities for students and teachers. The mobile classrooms are still being used and are reaching the end of their useful life. The school does not have a kitchen so food is brought in from other locations or simply heated in order to provide meals to students. A new parking lot was constructed on the north side of the property 4 years ago and provided more space for staff and visitors to park during school functions. A new gymnasium was constructed 2 years ago and alleviated the problem with the cafeteria doubling as a space for physical activities and exercise on days when students could not go outdoors.

Principal: Sherri Steele

School Motto: It's the Husky Way, Every Day!



Bedford Hills Elementary School

Grades Served: Kindergarten to 5th grade

Specialty School: No

Total Net Area: 46,943 square feet or 75.8%

Gross Area: 61,908 square feet

Total Number of Core Classrooms: 19 + 4 classrooms in a modular building

Support Spaces:

- Media Center
- Gymnasium
- Cafeteria with Stage

SUMMARY:

The school was renovated and expanded after the fire in 1992. Classrooms were reconfigured to the correct size, the main entrance and Administrative suite were relocated, and a new Media Center was constructed. A freestanding Gymnasium was recently added. The school does not have any Extended Learning Areas for small group or individual instruction. The school has a satellite Kitchen which should be replaced with fully functioning Kitchen. The Fine Art classrooms (Art and Music) are significantly undersized. In summary, Bedford Hills and Sheffield Elementary most closely resemble a contemporary elementary school since they have had the most complete renovation.

CAPACITY TO EXPAND:

The school is utilizing all of the buildable area on the site. The modular building should be replaced with permanent classrooms in the same location.



Bedford Hills Elementary

	2016-17	2017-18	2018-19	2019-20	2020-21	2021-22	2022-23	2023-24	2024-25	2025-26	2026-27	2027-28	2028-29	2029-30	2030-31	2031-32
PK	8	9	2	3	4	1	1	1	1	1	1	1	1	1	1	1
K	71	71	82	79	69	61	63	64	64	65	68	69	70	71	73	72
1	80	73	77	89	60	69	66	66	67	67	68	69	70	71	72	74
2	89	80	69	75	77	62	67	64	64	66	66	67	68	69	70	71
3	76	74	64	72	52	68	57	62	59	60	61	61	62	64	65	66
4	78	61	79	57	63	51	64	54	58	56	57	58	58	59	61	62
5	84	88	51	69	51	58	48	61	51	56	54	55	56	56	57	59
Total	486	456	424	444	376	370	366	372	364	371	375	380	385	391	399	405

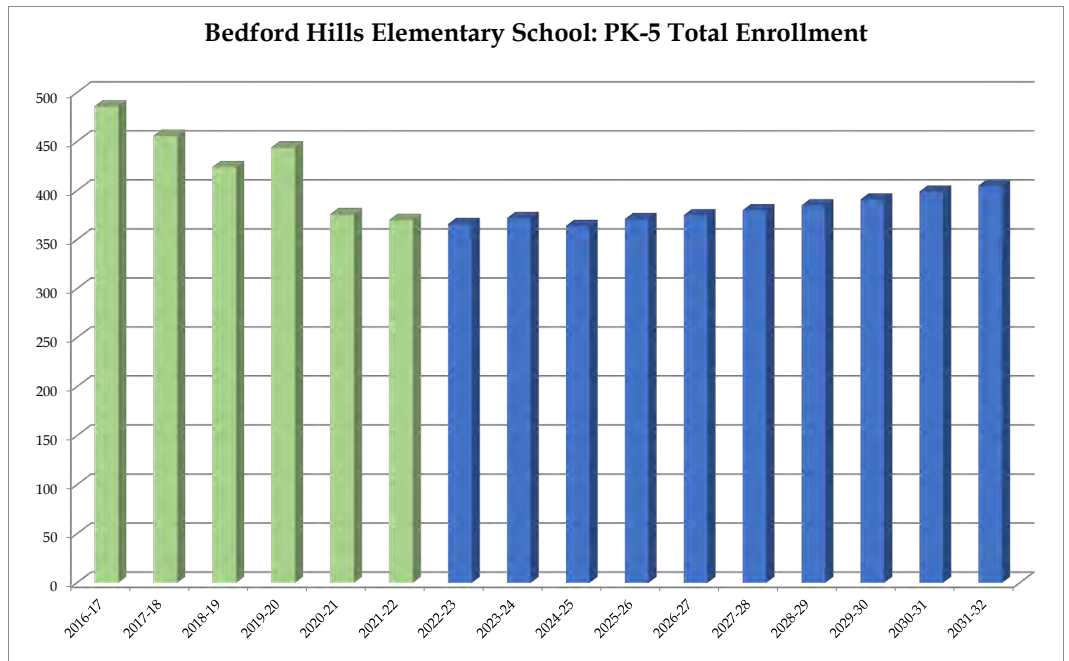
Total: Elementary	486	456	424	444	376	370	366	372	364	371	375	380	385	391	399	405
Change		-30	-32	20	-68	-6	-4	6	-8	7	4	5	5	6	8	6
Percent Change		-6.2%	-7.0%	4.7%	-15.3%	-1.6%	-1.1%	1.6%	-2.2%	1.9%	1.1%	1.3%	1.3%	1.6%	2.0%	1.5%

Forecasts developed March 2022

Green cells (2021-2022 and earlier) are historical data

Blue cells (2022-2023 and later) are forecasted years

Bedford Hills Elementary School: PK-5 Total Enrollment



Lynchburg City Schools, VA Bedford Hills Elementary School 2021-22 Student Density Analysis

Bedford Hills	
Total Enrollment (K-5th)	369
Out of District	1
Unmatched	0
Total Live-In (K-5th)	369
Live and Attend In	304
Live Out, Attend In	65
Live In, Attend Out	65

Legend

School Type

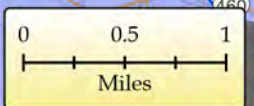
- Elementary School (Red square)
- Middle School (Green triangle)
- High School (Blue star)

2021-22 ES Boundaries

- Bedford Hills (Red)
- Dearington (Grey)
- Heritage (Light Blue)
- Linkhorne (Orange)
- Paul Munro (Purple)
- Perrymont (Yellow)
- RS Payne (Pink)
- Sandusky (Blue)
- Sheffield (Light Green)
- TC Miller (Brown)
- WM Bass (Dark Green)

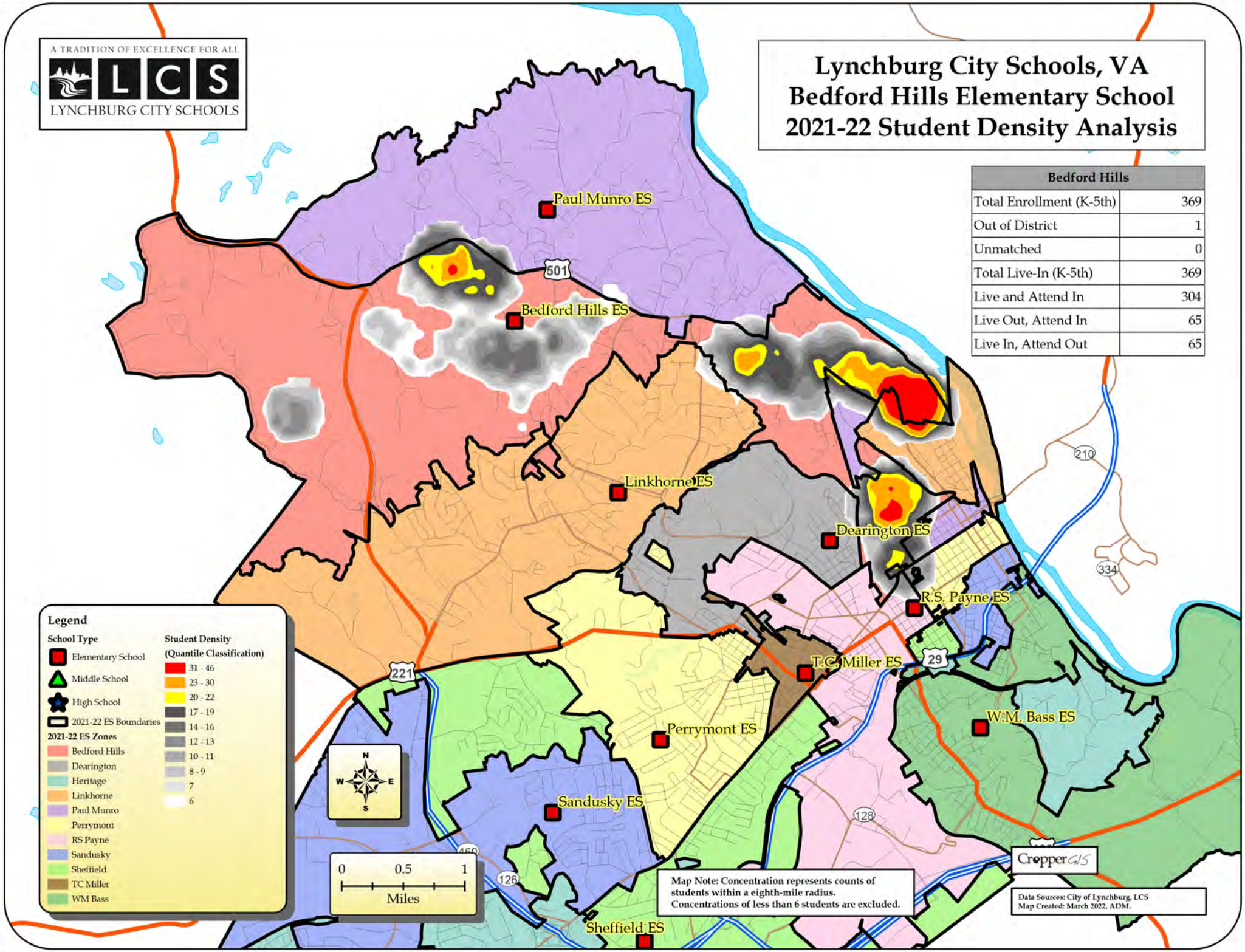
Student Density (Quantile Classification)

- 31 - 46 (Red)
- 23 - 30 (Yellow-Orange)
- 20 - 22 (Yellow)
- 17 - 19 (Light Yellow)
- 14 - 16 (Light Green)
- 12 - 13 (Green)
- 10 - 11 (Light Green)
- 8 - 9 (Light Green)
- 7 (Light Green)
- 6 (White)



Map Note: Concentration represents counts of students within a eighth-mile radius. Concentrations of less than 6 students are excluded.

CropperGIS
 Data Sources: City of Lynchburg, LCS
 Map Created: March 2022, ADM.



Carl B. Hutcherson Early Learning Center

2401 High Street, Lynchburg, VA 24504

2021-2022 Enrollment: 184 students

Functional Capacity: 166 students

Grades Served: Pre-Kindergarten (3 and 4 year olds)

Facility Timeline:

1960 = Original Building

1974 = Air Conditioning Installed

2007 = Electrical Upgrades, New Lighting and New Ceilings

2011 = New Roof (except multi-purpose room)

2013 = Renovation (new windows, HVAC in most spaces)

Gross Area: 34,979 square feet

Acreage: 8.7



Hutcherson Early Learning Center lies within the White Rock Hill neighborhood of Lynchburg, south of downtown. This facility contains the Pre-K and Early Learning Programs for Lynchburg City Schools. The school has undergone recent renovations to replace the main roof and to repair an existing curtainwall system that had begun to fail and pull away from the building structure. Playground upgrades also recently occurred giving the children a nice play area which is visible in front of the school. Though some renovations have been done at this facility, it has not undergone a full-building renovation and as a result there are some areas that have not been renovated and remain original to the 1958 construction.

Principal: Polly Smith



Carl B. Hutcherson Early Learning Center

Grades Served:	Pre-Kindergarten
Specialty School:	Early Learning Center for 3 and 4 year olds
Total Net Area:	24,279 square feet or 69.4%
Gross Area:	34,979 square feet
Total Number of Core Classrooms:	13
Support Spaces:	<ul style="list-style-type: none">• Cafeteria/Gymnasium

SUMMARY:

The school was designed as an elementary school and not an early learning center, so it is unfair to compare the design of this building to a contemporary ELC. Additionally, the Virginia Department of Education does not have any guidelines to use as a comparison. Early Learning Centers are becoming the standard for providing pre-kindergarten education versus utilizing classrooms in an elementary school. Ideally, this school would be redesigned/reorganized if it remains as an early learning center.

CAPACITY TO EXPAND:

Potential expansion of the school is limited due to the size and configuration of the site. The school is an appropriate size for an early learning center, which is typically smaller than an elementary school.



Linkhorne Elementary School

2501 Linkhorne Drive, Lynchburg, VA 24503

Current Enrollment: 419 students
Functional Capacity: 584 students
Grades Served: Kindergarten to 5th grade

Facility Timeline:

1966 = Original Building
1971 = Addition
1988 = Fire / Renovation
2012 = New Roof (rear classrooms only)
2021 = New Roof (1969 addition)

Gross Area: 57,112 square feet

Acreage: 10.0



Linkhorne was originally designed as an octagonal structure and 5 years later a second octagonal structure was built on the same site. During the fire in 1988, the second octagonal structure was completely destroyed. A large scale renovation and addition was completed after the fire damage. The new design was constructed as an open space learning environment. This model utilizes moveable partitions to separate classroom and instructional spaces instead of permanent (fixed) walls in some locations. The concept faded during the next decade or so but has recently been reinstated in several adjacent educational divisions. Linkhorne Elementary is adjacent to Linkhorne Middle School and is located within the Cranehill Drive neighborhood.

Principal: Dr. Lillian Guzowski



Linkhorne Elementary School

Grades Served: Kindergarten to 5th grade

Specialty School: No

Total Net Area: 44,179 square feet or 77.4%

Gross Area: 57,112 square feet

Total Number of Core Classrooms: 23

Support Spaces:

- Media Center
- Multipurpose Room with Stage
- Cafeteria

SUMMARY:

Three Kindergarten classrooms are located in a separate building and should be either demolished or an enclosed walkway constructed to connect the rooms to the rest of the building. The Core Classrooms are larger than the VDOE guidelines. The school has one Extended Learning Area. The Fine Art classrooms (Art and Music) are smaller than the VDOE guidelines. The school does not have Gymnasium, which is a major need. The size of the Kitchen is too small in relation to the size of the capacity of the school.

CAPACITY TO EXPAND:

The original 1966 octagonal classroom pod should be demolished. There is significant area on this side (south) of the school to expand, allowing the enrollment to be increased.



Linkhorne Elementary

	2016-17	2017-18	2018-19	2019-20	2020-21	2021-22	2022-23	2023-24	2024-25	2025-26	2026-27	2027-28	2028-29	2029-30	2030-31	2031-32
PK	14	10	9	2	6	5	5	5	5	5	5	5	5	5	5	5
K	68	72	60	79	61	67	66	67	68	70	72	73	74	75	77	76
1	80	76	69	63	70	69	68	69	70	71	73	74	75	76	77	79
2	89	77	75	69	53	78	68	67	68	69	70	72	73	74	75	76
3	82	75	69	68	75	60	75	65	64	65	67	68	70	71	73	74
4	73	84	59	72	62	74	58	73	63	63	64	66	67	69	70	72
5	72	64	73	62	77	66	75	59	74	64	64	65	67	68	70	71
Total	478	458	414	415	404	419	415	405	412	407	415	423	431	438	447	453

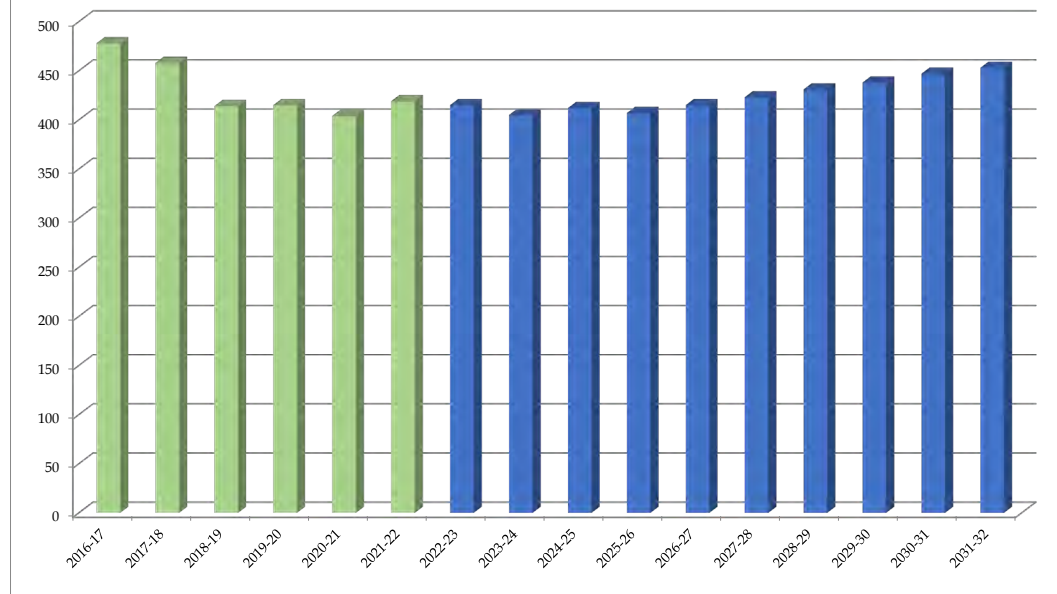
Total: Elementary	478	458	414	415	404	419	415	405	412	407	415	423	431	438	447	453
Change		-20	-44	1	-11	15	-4	-10	7	-5	8	8	8	7	9	6
Percent Change		-4.2%	-9.6%	0.2%	-2.7%	3.7%	-1.0%	-2.4%	1.7%	-1.2%	2.0%	1.9%	1.9%	1.6%	2.1%	1.3%

Forecasts developed March 2022

Green cells (2016-2022 and earlier) are historical data

Blue cells (2022-2032 and later) are forecasted years

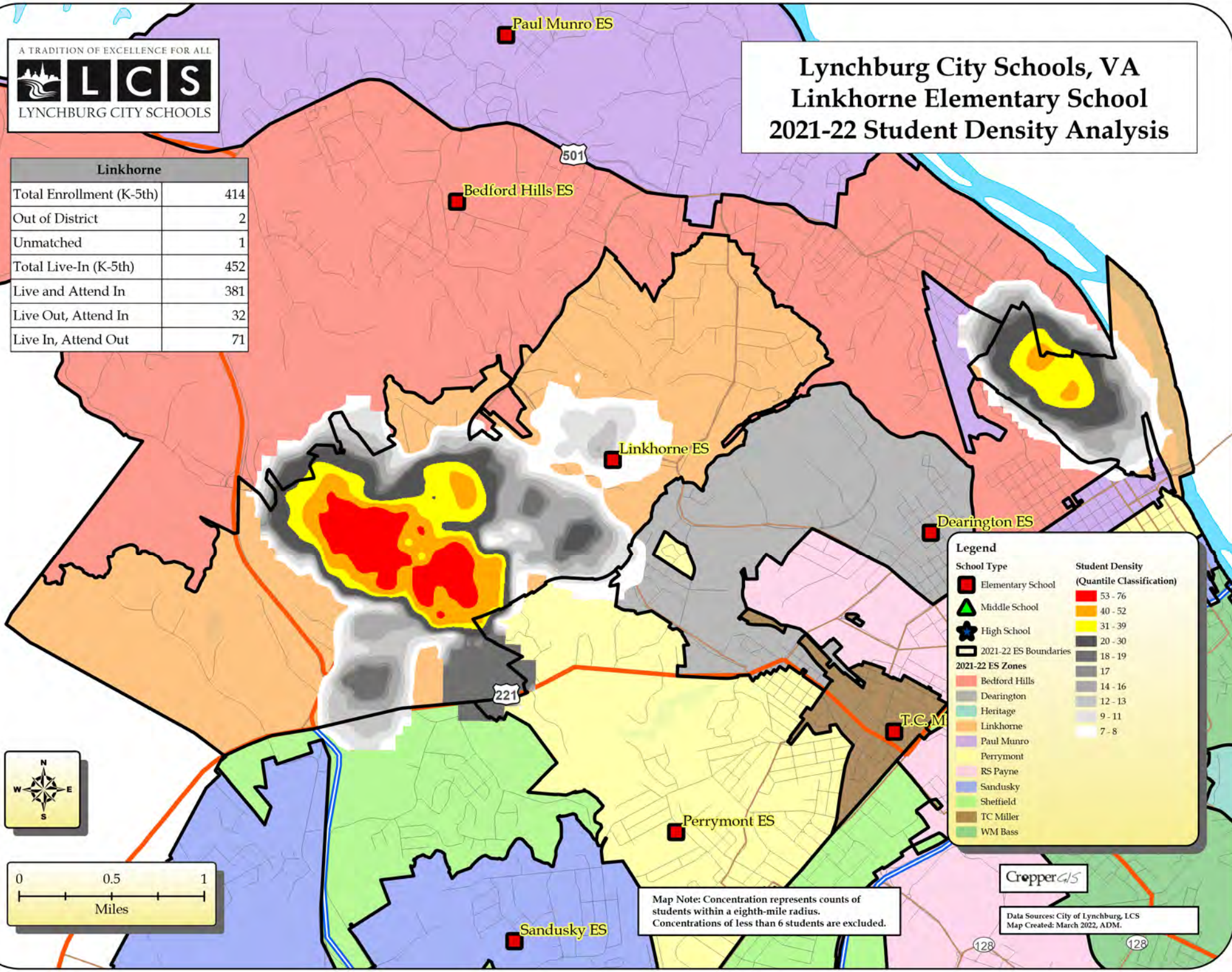
Linkhorne Elementary School: PK-5 Total Enrollment





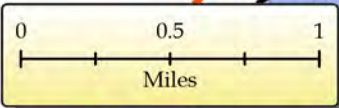
Lynchburg City Schools, VA Linkhorne Elementary School 2021-22 Student Density Analysis

Linkhorne	
Total Enrollment (K-5th)	414
Out of District	2
Unmatched	1
Total Live-In (K-5th)	452
Live and Attend In	381
Live Out, Attend In	32
Live In, Attend Out	71



Legend

School Type	Student Density (Quantile Classification)
Elementary School	53 - 76
Middle School	40 - 52
High School	31 - 39
2021-22 ES Boundaries	20 - 30
2021-22 ES Zones	18 - 19
Bedford Hills	17
Dearington	14 - 16
Heritage	12 - 13
Linkhorne	9 - 11
Paul Munro	7 - 8
Perrymont	
RS Payne	
Sandusky	
Sheffield	
TC Miller	
WM Bass	



Map Note: Concentration represents counts of students within a eighth-mile radius. Concentrations of less than 6 students are excluded.



Data Sources: City of Lynchburg, LCS
Map Created: March 2022, ADM.

Sandusky Elementary School

5828 Apache Lane, Lynchburg, VA 24502

Current Enrollment: 329 students
Functional Capacity: 438 students
Grades Served: Pre-K to 5th grade

Facility Timeline:

1963 = Original Building
1966 = Addition
1974 = Addition
2014 = AHU-3 Modifications

Gross Area: 45,891 square feet

Acreage: 10.0



Sandusky Elementary School is a one-story facility and is located within the Sandusky neighborhood, adjacent to the new Sandusky Middle School. This facility has not been renovated since its original construction in 1963 – almost 60 years ago. Most of the systems and finishes are from 1963 and are beginning to fail and/or wear out. This facility has held up well due to its age and has been slated for a heavy renovation since 2006, yet City Council has not elected to fund this project at this point in time.

Principal: Derrick Womack

School Motto: We Do It Better When We Do It Together



Sandusky Elementary School

Grades Served: Kindergarten to 5th grade

Specialty School: No

Total Net Area: 36,240 square feet or 78.9%

Gross Area: 45,891 square feet

Total Number of Core Classrooms: 18

Support Spaces:

- Media Center
- Multipurpose Room with Stage
- Cafeteria

SUMMARY:

The Core Classrooms were designed around common areas that could serve as Extended Learning Areas. These classrooms are also larger than the VDOE guidelines which is a plus. For these reasons the school is an excellent candidate to renovate. The school does not have a Gym and the Media Center is an open design to the adjacent corridors which is not ideal. The school has a satellite Kitchen which should be replaced with fully functioning Kitchen. The Administrative suite is poorly designed.

CAPACITY TO EXPAND:

This school has been a candidate to replace for many years. Consideration was given to building the replacement school in front of the existing school (in the parking lot), but this is not ideal. A replacement school should be built on the site of the existing building. Consideration should be given to constructing a two-story school.



Sandusky Elementary

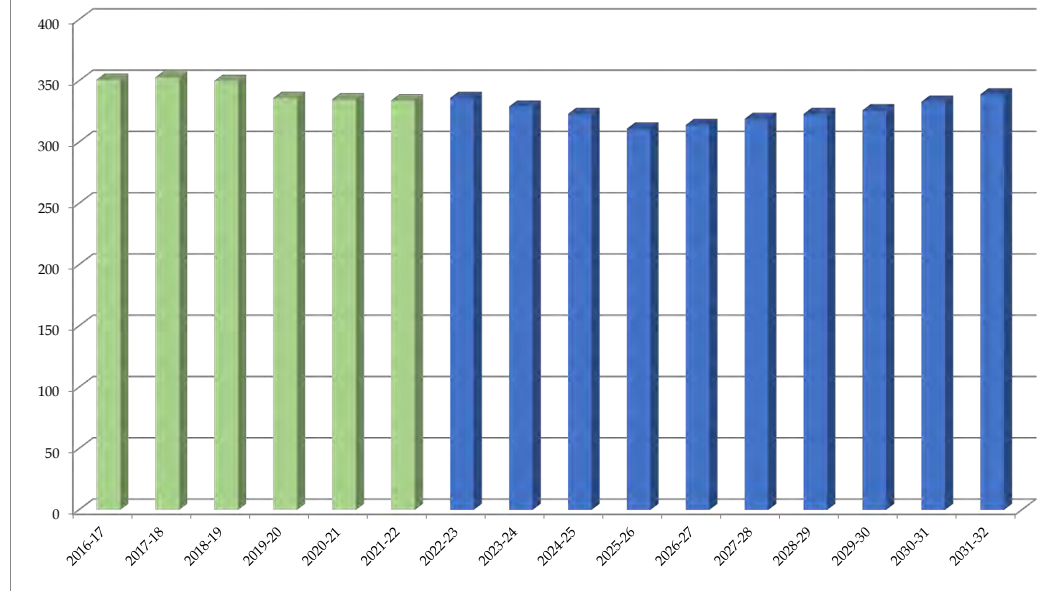
	2016-17	2017-18	2018-19	2019-20	2020-21	2021-22	2022-23	2023-24	2024-25	2025-26	2026-27	2027-28	2028-29	2029-30	2030-31	2031-32
PK	18	16	17	13	16	9	9	9	9	9	9	9	9	9	9	9
K	54	53	58	66	46	48	48	49	49	50	50	51	51	52	52	53
1	53	62	54	51	64	51	49	49	50	50	51	51	52	52	53	53
2	66	55	51	52	59	68	52	50	50	52	52	53	53	54	55	56
3	52	61	44	49	55	55	64	49	47	48	50	50	51	51	53	54
4	50	58	65	40	47	56	56	65	50	49	50	52	52	53	54	56
5	58	48	61	65	48	47	58	58	68	53	52	53	55	55	57	58
Total	351	353	350	336	335	334	336	329	323	311	314	319	323	326	333	339
Total: Elementary	351	353	350	336	335	334	336	329	323	311	314	319	323	326	333	339
Change		2	-3	-14	-1	-1	2	-7	-6	-12	3	5	4	3	7	6
Percent Change		0.6%	-0.8%	-4.0%	-0.3%	-0.3%	0.6%	-2.1%	-1.8%	-3.7%	1.0%	1.6%	1.3%	0.9%	2.1%	1.8%

Forecasts developed March 2022

Green cells (2021-2022 and earlier) are historical data

Blue cells (2022-2023 and later) are forecasted years

Sandusky Elementary School: PK-5 Total Enrollment



Lynchburg City Schools, VA Sandusky Elementary School 2021-22 Student Density Analysis

Legend

School Type

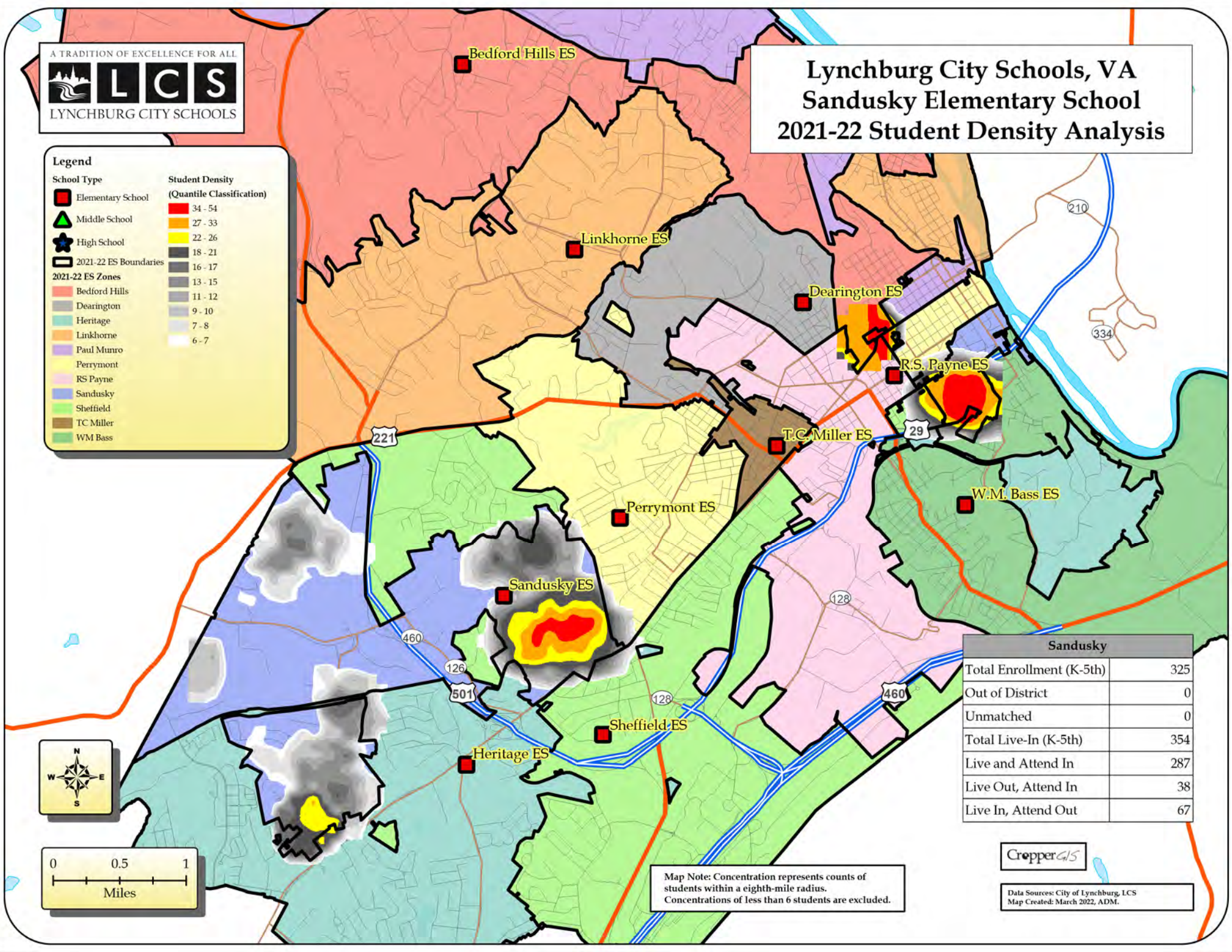
- Elementary School
- ▲ Middle School
- ★ High School
- 2021-22 ES Boundaries

2021-22 ES Zones

- Bedford Hills
- Dearington
- Heritage
- Linkhorne
- Paul Munro
- Perrymont
- RS Payne
- Sandusky
- Sheffield
- TC Miller
- WM Bass

Student Density (Quantile Classification)

- 34 - 54
- 27 - 33
- 22 - 26
- 18 - 21
- 16 - 17
- 13 - 15
- 11 - 12
- 9 - 10
- 7 - 8
- 6 - 7



Sandusky	
Total Enrollment (K-5th)	325
Out of District	0
Unmatched	0
Total Live-In (K-5th)	354
Live and Attend In	287
Live Out, Attend In	38
Live In, Attend Out	67

Map Note: Concentration represents counts of students within a eighth-mile radius. Concentrations of less than 6 students are excluded.

Paul Munro Elementary School

4641 Locksview Road, Lynchburg, VA 24503

Current Enrollment: 355 students
Functional Capacity: 452 students
Grades Served: Pre-Kindergarten to 5th grade

Facility Timeline:

1961 = Original Building
1974 = Air Conditioning installed
1990 = Rear Classroom Addition
1992 = Electrical Upgrades
2004 = HVAC Replacement in Addition
2012 = Window Replacement (2 Phases/2 Summers)
2021 = Roof Replacement on Original Building and Connector

Gross Area: 44,837 square feet

Acreage: 9.2

Paul Munro Elementary School is also located in the Boonsboro area of the City. While this facility has seen a classroom addition and some minor renovations (new windows and roof) throughout the years, it has never undergone a full-blown renovation. Many of the finishes (floor, wall, ceiling) are original to the school and have not been upgraded. As a result, these finishes are showing signs of heavy usage and some have begun to reach their expected end of life. The school does not have a fully operational kitchen so food is brought in from other locations or simply heated in order to provide meals to students. There is also no gym on this site, so the cafeteria space doubles as space for movement education on days that inclement weather prevents students from being able to play and exercise outdoors. As one can imagine, this presents a challenging environment for students and staff to coexist within one space and still keep noise levels at a manageable point.

Principal: Donna Baer

School Motto: Proud of Our Legacy. Challenged by the Future. We are family!



Paul Munro Elementary School

Grades Served: Pre-Kindergarten to 5th grade

Specialty School: No

Total Net Area: 35,299 square feet or 78.7%

Gross Area: 44,837 square feet

Total Number of Core Classrooms: 20

Support Spaces:

- Media Center
- Multipurpose Room
- Cafeteria with Stage

SUMMARY:

The Core Classrooms are sized correctly as compared to the VDOE guidelines. The school does not have any Extended Learning Areas for small group or individual instruction. The Fine Art classrooms (Art and Music) are significantly undersized. The school does not have Gymnasium, which is a major need. The school has a satellite Kitchen which should be replaced with fully functioning Kitchen. The Administrative suite is undersized.

CAPACITY TO EXPAND:

A few additional classrooms could be added on to the end of the southern wing and a new Gym could be constructed on the existing asphalt playground. Parking should be extended across the front of the school.



Paul Munro Elementary

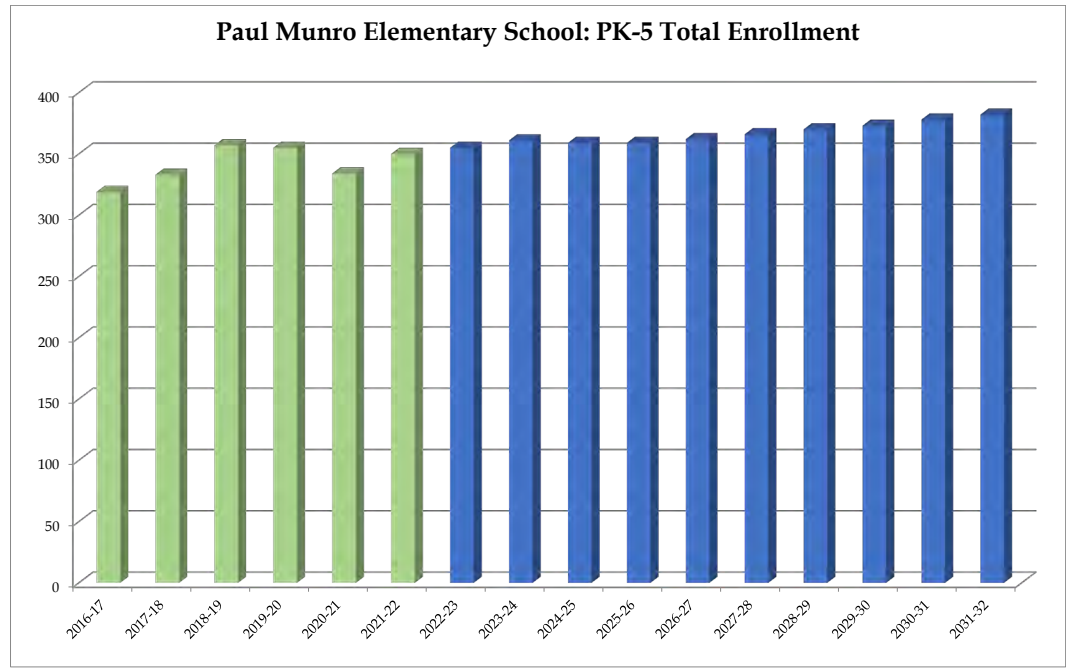
	2016-17	2017-18	2018-19	2019-20	2020-21	2021-22	2022-23	2023-24	2024-25	2025-26	2026-27	2027-28	2028-29	2029-30	2030-31	2031-32
PK	50	64	73	63	72	65	65	65	65	65	65	65	65	65	65	65
K	58	55	64	67	58	55	56	57	57	58	57	58	58	59	58	57
1	54	58	52	55	50	55	53	53	54	54	55	55	56	56	57	57
2	46	47	49	46	50	52	51	49	49	50	51	52	52	53	54	55
3	39	30	41	46	38	48	47	46	45	45	47	47	48	48	50	51
4	29	49	32	41	38	37	47	46	45	44	44	46	46	47	48	50
5	43	30	46	37	28	38	36	45	44	43	43	43	45	45	46	47
Total	319	333	357	355	334	350	355	361	359	359	362	366	370	373	378	382
Total: Elementary	319	333	357	355	334	350	355	361	359	359	362	366	370	373	378	382
Change		14	24	-2	-21	16	5	6	-2	0	3	4	4	3	5	4
Percent Change		4.4%	7.2%	-0.6%	-5.9%	4.8%	1.4%	1.7%	-0.6%	0.0%	0.8%	1.1%	1.1%	0.8%	1.3%	1.1%

Forecasts developed March 2022

Green cells (2021-2022 and earlier) are historical data

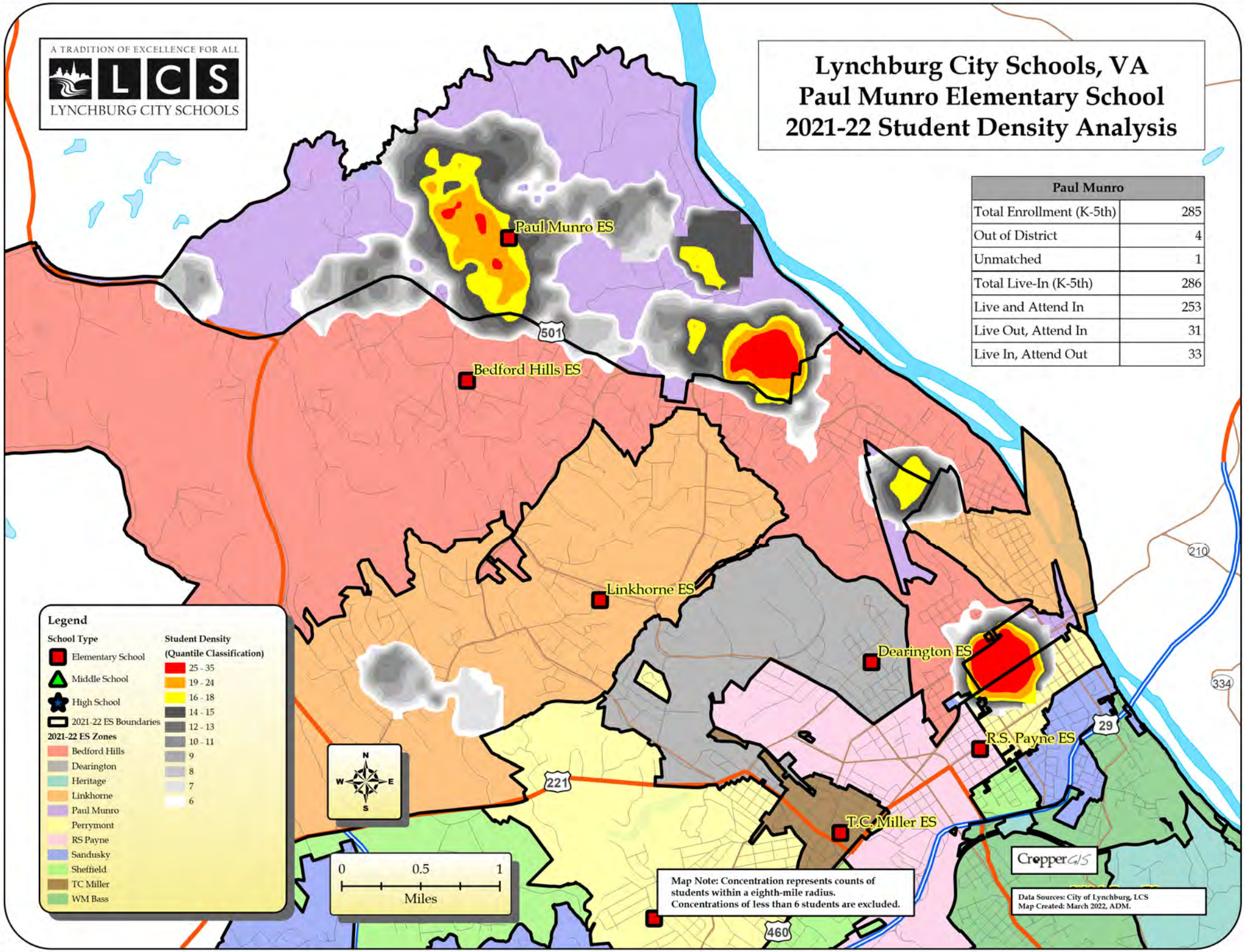
Blue cells (2022-2023 and later) are forecasted years

Paul Munro Elementary School: PK-5 Total Enrollment



Lynchburg City Schools, VA Paul Munro Elementary School 2021-22 Student Density Analysis

Paul Munro	
Total Enrollment (K-5th)	285
Out of District	4
Unmatched	1
Total Live-In (K-5th)	286
Live and Attend In	253
Live Out, Attend In	31
Live In, Attend Out	33



Legend

School Type

- Elementary School (Red square)
- Middle School (Green triangle)
- High School (Blue star)

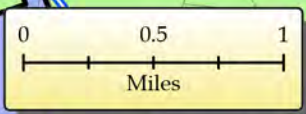
2021-22 ES Boundaries

2021-22 ES Zones

- Bedford Hills (Red)
- Dearington (Grey)
- Heritage (Light Blue)
- Linkhorne (Orange)
- Paul Munro (Purple)
- Perrymont (Yellow)
- RS Payne (Pink)
- Sandusky (Light Green)
- Sheffield (Green)
- TC Miller (Brown)
- WM Bass (Dark Green)

Student Density (Quantile Classification)

- 25 - 35 (Red)
- 19 - 24 (Yellow-Orange)
- 16 - 18 (Yellow)
- 14 - 15 (Light Yellow)
- 12 - 13 (Light Green)
- 10 - 11 (Light Blue)
- 9 (Light Blue-Grey)
- 8 (Light Grey)
- 7 (Light Blue)
- 6 (White)



Map Note: Concentration represents counts of students within an eighth-mile radius. Concentrations of less than 6 students are excluded.

CropperGIS
 Data Sources: City of Lynchburg, LCS
 Map Created: March 2022, ADM.

R. S. Payne Elementary School

1201 Floyd Street, Lynchburg, VA 24501

Current Enrollment: 454 students
Functional Capacity: 679 students
Grades Served: Pre-Kindergarten to 5th grade

Facility Timeline:

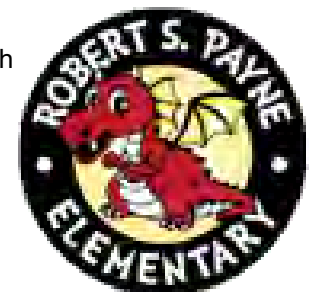
- 1924 = Original Building
- 1987 = Phase 1 Renovation:
New Interior Doors / Brick Repointing / New Windows / Lights
- 1988 = Phase 2 Renovation:
New Interior Doors / Cornice Repair / New Windows / EIFS / Lights
- 1989 = Phase 3 Renovation: New Windows / Toilet Fixtures
- 1992 = Phase 4 Renovation: Mechanical / Electrical / Plumbing / Fire Protection
- 1994 = Phase 5 Renovation: New Finishes / Casework
- 1995 = Phase 6 Renovation: New Finishes / Toilet Partitions
- 1996 = Phase 7 Renovation: New Finishes / Casework / Ceilings
- 1998 = Phase 8 Renovation: Mechanical Controls
- 2003 = Boiler Replacement
- 2019 = New TPO Membrane Roof (low slope areas only)

Gross Area: 62,142 square feet

Acreage: 4.0

R. S. Payne is one of the oldest school buildings within the Division. R. S. Payne is located along 12th Street and is also home to the GO (Gifted Opportunities) Center; a Division-wide program for 3rd-5th graders. Payne was initially designed as a Junior High school and is currently being used as an elementary school. Heavy renovations were completed in the late 1980's through the early 1990s and were phased over 10 years, due to both cost and time constraints. The work completed during those renovations is now 20-30 years old. The roof was replaced in 2019. Much of the existing floor and roof structure is wood framed which is a concern if there was ever a fire. The building consists of 3-stories with an attic, which is currently not being used, as there is only one means of egress from that level.

Principal: Kellie Baldwin



R. S. Payne Elementary School

Grades Served: Pre-Kindergarten to 5th grade

Specialty School: No

Total Net Area: 62,184 square feet or 58.4%

Gross Area: 106,357 square feet

Total Number of Core Classrooms: 28

Support Spaces:

- Media Center
- Gymnasium
- Auditorium with Stage
- Cafeteria

SUMMARY:

Payne Elementary was designed as a Junior High School and is the most inefficient of the Division's elementary schools. This is one of many concerns regarding the future of this school for the Division. Core Classrooms serving the grade levels are undersized. The school does not have any Extended Learning Areas. The Fine Art classrooms (Art and Music) are quite large. The school is fortunate to have a Gymnasium and the Dining Room is ample in size in relation to the enrollment. Payne Elementary is one of three elementary schools that have an auditorium. The Administrative suite is undersized.

CAPACITY TO EXPAND:

The school is landlocked and is located on the smallest parcel in the Division. Additional land would have to be acquired to expand the building.



Robert S. Payne Elementary

	2016-17	2017-18	2018-19	2019-20	2020-21	2021-22	2022-23	2023-24	2024-25	2025-26	2026-27	2027-28	2028-29	2029-30	2030-31	2031-32
PK	47	45	51	60	68	51	51	51	51	51	51	51	51	51	51	51
K	58	66	61	52	49	55	57	58	58	59	59	60	60	60	60	61
1	52	68	56	59	48	58	59	59	60	60	61	61	62	62	63	63
2	48	52	63	54	55	46	56	57	57	58	58	59	59	60	60	60
3	102	88	90	99	71	80	65	80	81	81	84	84	85	85	88	88
4	109	95	91	91	93	73	78	64	78	79	79	82	82	83	83	86
5	92	114	102	102	83	86	70	75	61	75	76	76	79	79	80	80
Total	508	528	514	517	467	449	436	444	446	463	468	473	478	480	485	489

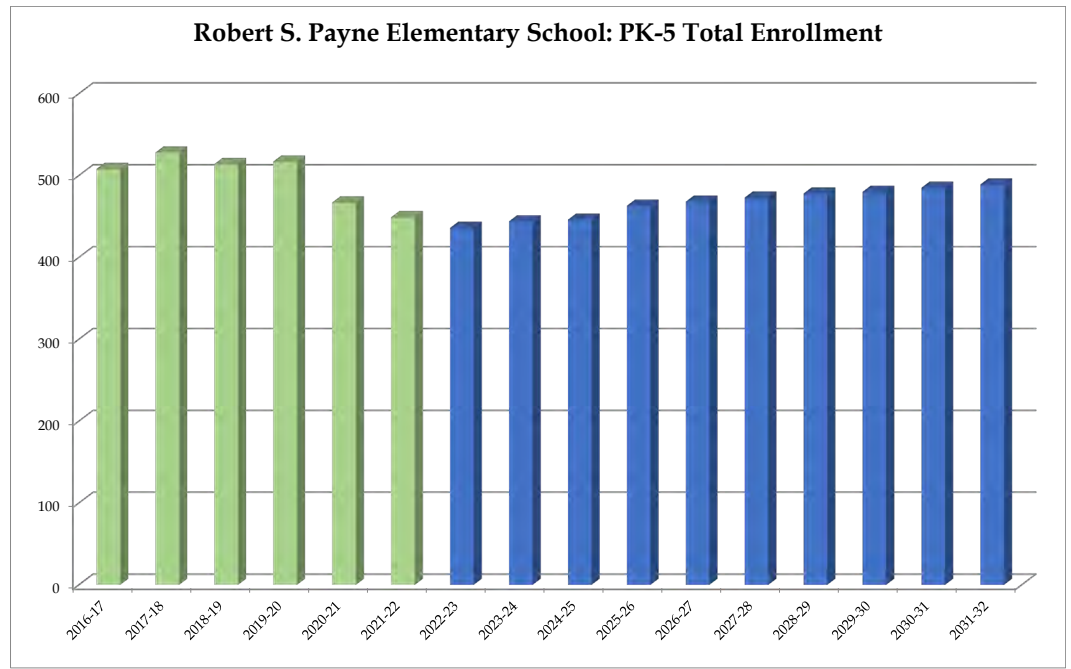
Total: Elementary	508	528	514	517	467	449	436	444	446	463	468	473	478	480	485	489
Change		20	-14	3	-50	-18	-13	8	2	17	5	5	5	2	5	4
Percent Change		3.9%	-2.7%	0.6%	-9.7%	-3.9%	-2.9%	1.8%	0.5%	3.8%	1.1%	1.1%	1.1%	0.4%	1.0%	0.8%

Forecasts developed March 2022

Green cells (2021-2022 and earlier) are historical data

Blue cells (2022-2023 and later) are forecasted years

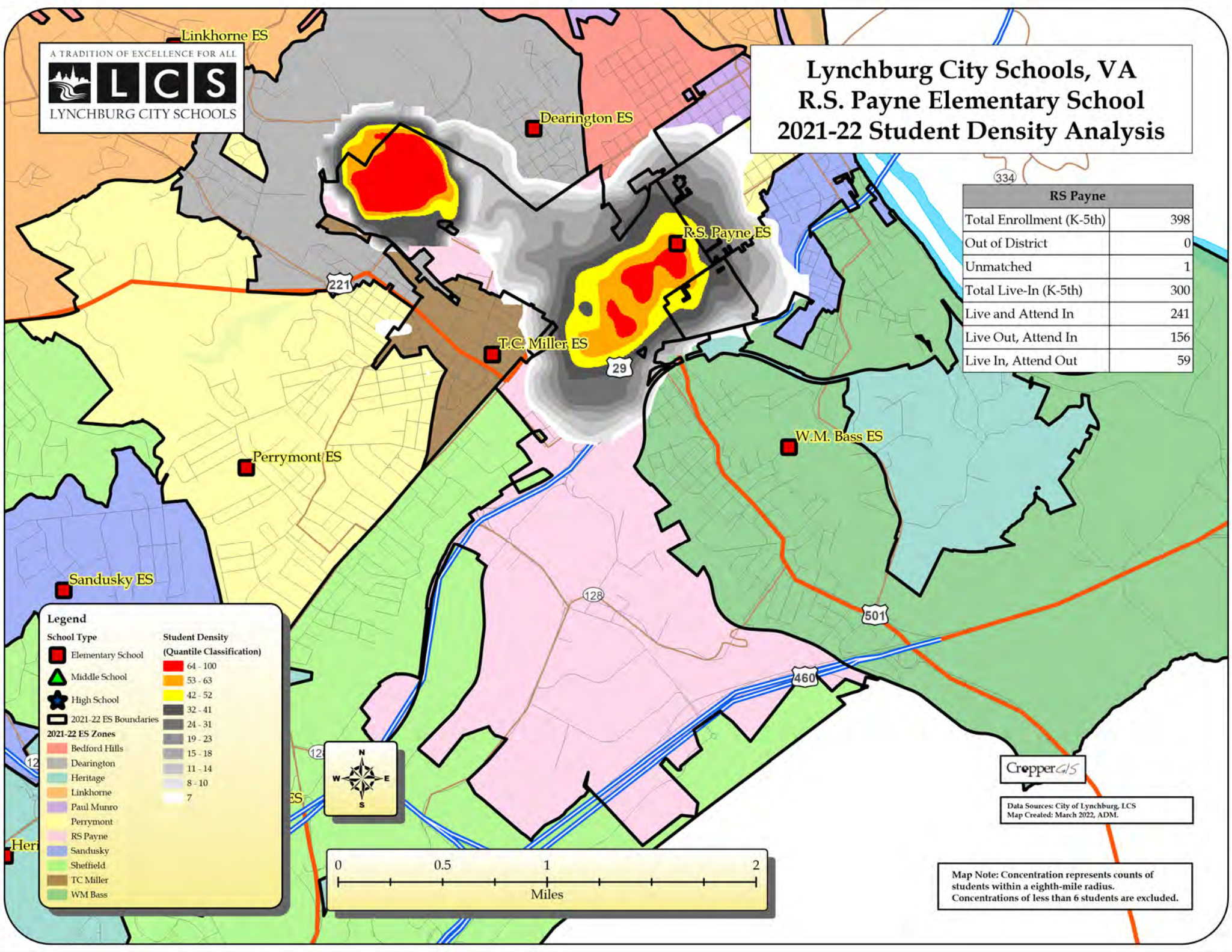
Robert S. Payne Elementary School: PK-5 Total Enrollment





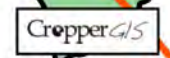
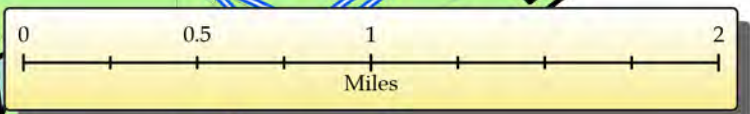
Lynchburg City Schools, VA R.S. Payne Elementary School 2021-22 Student Density Analysis

RS Payne	
Total Enrollment (K-5th)	398
Out of District	0
Unmatched	1
Total Live-In (K-5th)	300
Live and Attend In	241
Live Out, Attend In	156
Live In, Attend Out	59



Legend

School Type	Student Density (Quantile Classification)
Elementary School	64 - 100
Middle School	53 - 63
High School	42 - 52
2021-22 ES Boundaries	32 - 41
2021-22 ES Zones	24 - 31
Bedford Hills	19 - 23
Dearington	15 - 18
Heritage	11 - 14
Linkhorne	8 - 10
Paul Munro	7
Perrymont	
RS Payne	
Sandusky	
Sheffield	
TC Miller	
WM Bass	



Data Sources: City of Lynchburg, LCS
Map Created: March 2022, ADM.

Map Note: Concentration represents counts of students within a eighth-mile radius. Concentrations of less than 6 students are excluded.

Perrymont Elementary School

409 Perrymont Avenue, Lynchburg, VA 24502

Current Enrollment: 371 students
Functional Capacity: 486 students
Grades Served: Pre-Kindergarten to 5th grade

Facility Timeline:

1954 = Original Building
1956 = Classroom Addition
1983 = Renovation: Lights & Ceilings
1993 = Rear Classroom Addition
2002 = Window Replacement
2007 = Controls
2007 = Reroof
2020 = New Stand Alone Gymnasium

Gross Area: 58,886 square feet

Acreage: 33.4

Perrymont Elementary is located in the Fort Hill area of the City. Two separate classroom additions were constructed over the years to add capacity at this school. The roof and windows have been replaced and the most recent project included the construction of a stand-alone gymnasium (2020). Perrymont sits on a relatively large parcel of land (33.4 acres) and has ample room for a playground and playing fields. The playground was renovated, and new equipment added as part of the gymnasium project. This site has significant acreage, but little room to expand the school due to the topography, location of a City park and the surrounding natural areas.

Principal: Tyrone Gafford

School Motto: Where We Take Pride In Learning



Perrymont Elementary School

Grades Served: Pre-Kindergarten to 5th grade

Specialty School: No

Total Net Area: 42,128 square feet or 71.4%

Gross Area: 58,886 square feet

Total Number of Core Classrooms: 20

Support Spaces:

- Media Center
- Gymnasium
- Cafeteria with Stage

SUMMARY:

The Core Classrooms do not meet the minimums of the Virginia Department of Education. The school does not have any Extended Learning Areas for small group or individual instruction. The Fine Art classrooms (Art and Music) are significantly undersized. The school recently had a freestanding Gymnasium built. The Food Service (Kitchen and Dining Room) areas are adequately sized. The Administrative suite is undersized.

CAPACITY TO EXPAND:

The site is large, but is shared with a park and a stormwater management area. Expanding the school would be difficult due to the items noted above and the topography of the site.



Perrymont Elementary

	2016-17	2017-18	2018-19	2019-20	2020-21	2021-22	2022-23	2023-24	2024-25	2025-26	2026-27	2027-28	2028-29	2029-30	2030-31	2031-32
PK	26	10	21	22	12	37	37	37	37	37	37	37	37	37	37	37
K	66	74	52	59	35	57	58	58	59	59	59	59	60	60	62	61
1	59	62	64	47	59	47	55	56	56	57	57	58	58	59	59	61
2	57	62	65	59	50	62	48	56	57	57	59	59	60	60	61	61
3	67	47	46	57	58	48	60	46	54	55	56	58	58	59	59	60
4	68	67	43	46	53	58	46	57	44	51	53	54	56	56	57	57
5	57	63	58	45	43	61	57	45	56	43	50	52	53	55	55	56
Total	400	385	349	335	310	370	361	355	363	359	371	377	382	386	390	393

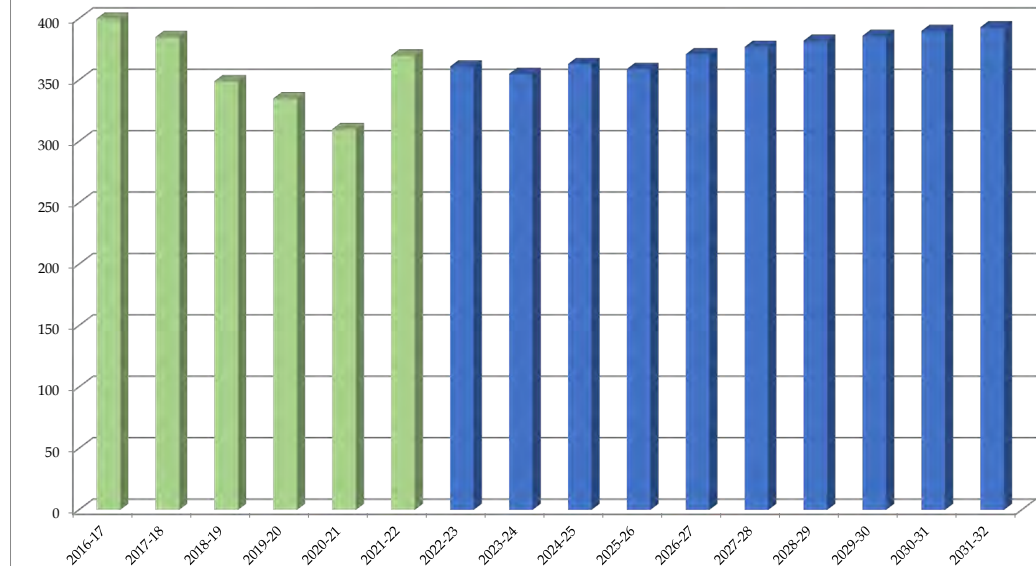
Total: Elementary	400	385	349	335	310	370	361	355	363	359	371	377	382	386	390	393
Change		-15	-36	-14	-25	60	-9	-6	8	-4	12	6	5	4	4	3
Percent Change		-3.8%	-9.4%	-4.0%	-7.5%	19.4%	-2.4%	-1.7%	2.3%	-1.1%	3.3%	1.6%	1.3%	1.0%	1.0%	0.8%

Forecasts developed March 2022

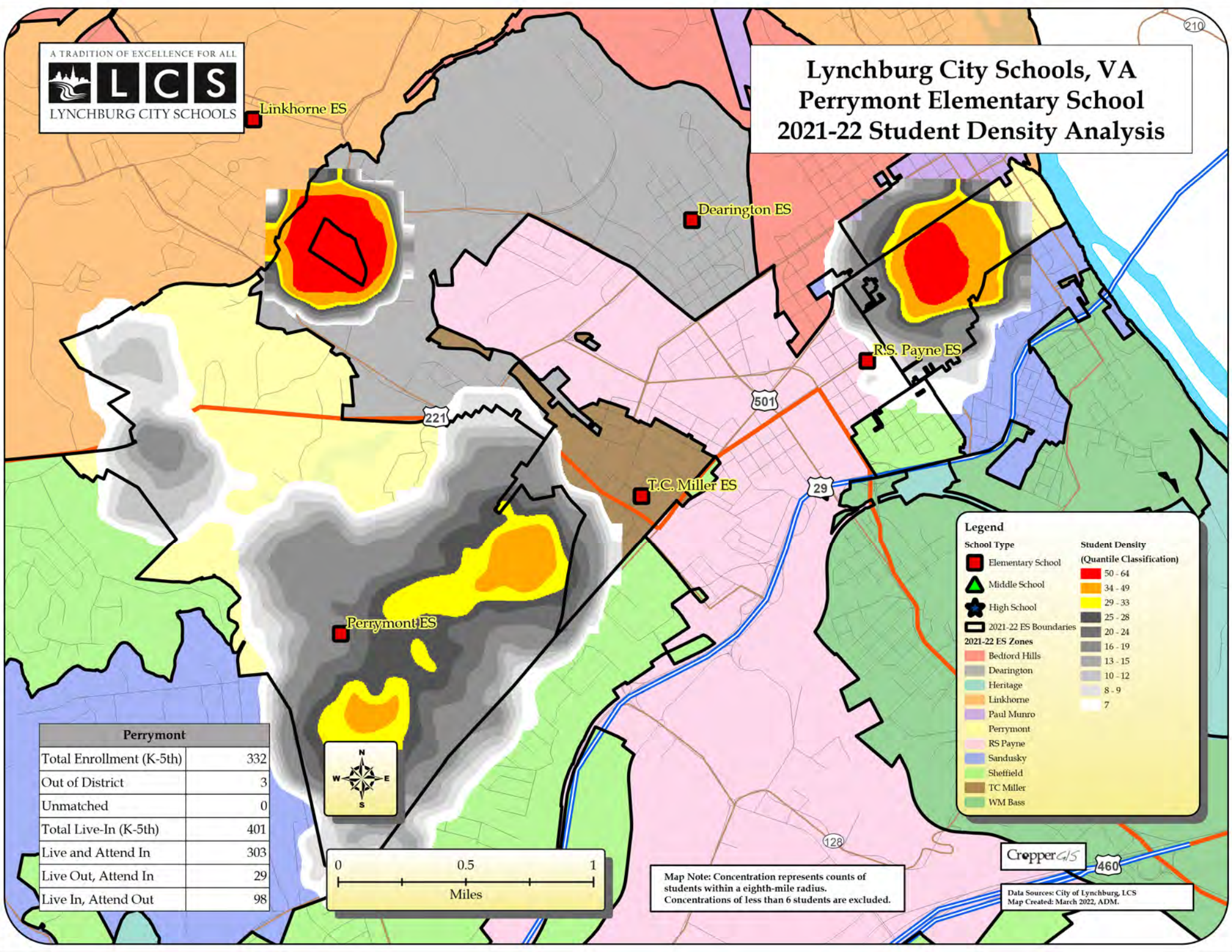
Green cells (2021-2022 and earlier) are historical data

Blue cells (2022-2023 and later) are forecasted years

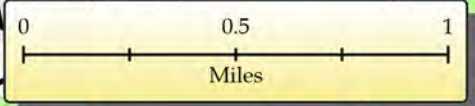
Perrymont Elementary School: PK-5 Total Enrollment



Lynchburg City Schools, VA Perrymont Elementary School 2021-22 Student Density Analysis



Perrymont	
Total Enrollment (K-5th)	332
Out of District	3
Unmatched	0
Total Live-In (K-5th)	401
Live and Attend In	303
Live Out, Attend In	29
Live In, Attend Out	98



Map Note: Concentration represents counts of students within a eighth-mile radius. Concentrations of less than 6 students are excluded.

Legend

Elementary School	50 - 64
Middle School	34 - 49
High School	29 - 33
2021-22 ES Boundaries	25 - 28
2021-22 ES Zones	20 - 24
Bedford Hills	16 - 19
Dearington	13 - 15
Heritage	10 - 12
Linkhorne	8 - 9
Paul Munro	7
Perrymont	
RS Payne	
Sandusky	
Sheffield	
TC Miller	
WM Bass	

T. C. Miller Elementary School

600 Mansfield Avenue, Lynchburg, VA 24501

Current Enrollment: 197 students
Functional Capacity: 300 students
Grades Served: Kindergarten to 5th grade

Facility Timeline:

1932 = Original Building
1993 = Renovation: New Elevator / Windows / Doors / Finishes
1998 = Boiler Replacement
2002 = Humidity Control
2007 = Controls
2012 = Reroof (low slope area only)

Gross Area: 37,974 square feet

Acreage: 4.3



T. C. Miller is another older structure within the Division and is located near the City Stadium. T. C. Miller is a 3-story structure and is a School for Innovation. Some of the student population is pulled from the adjacent neighborhoods while others are part of a voluntary lottery system that pulls from across the Division. The facility has held up well despite its age. This school includes separate spaces for both the gym and auditorium, a luxury that most elementary schools do not have under the same roof. The windows and low-slope roof have been replaced within recent years and the facility has been modernized by adding an elevator and updating finishes throughout most spaces. The modernization of this facility was still able to preserve the charm and character of the past and includes elements such as arched transom windows above many doors and even an original fireplace in the teacher's lounge.

Principal: Dr. Jeff Guerin

School Motto: #TCMSoars!



T. C. Miller Elementary School

Grades Served:	Kindergarten to 5 th grade
Specialty School:	School of Innovation focusing on STEM and Cultural Arts
Total Net Area:	24,786 square feet or 65.3%
Gross Area:	37,974 square feet
Total Number of Core Classrooms:	12
Support Spaces:	<ul style="list-style-type: none">• Media Center• Auditorium with Stage• Cafeteria

SUMMARY:

The Core Classrooms serving the grade levels are undersized and do not meet the minimums of the Virginia Department of Education. The school utilizes its wide corridors for Extended Learning Areas. The Media Center is undersized. The school does not have a Gymnasium. T. C. Miller is one of three elementary schools that have an auditorium. The school has a satellite Kitchen which should be replaced with fully functioning Kitchen. The Administrative suite is undersized. Overall, the school is relatively inefficient due to being 3 stories in height and the larger than normal corridors.

CAPACITY TO EXPAND:

The school is landlocked between the city streets, residential neighbors and Westover Dairy. Expansion of the school is possible if additional land is acquired for site amenities (parking and playgrounds)



T. C. Miller Elementary

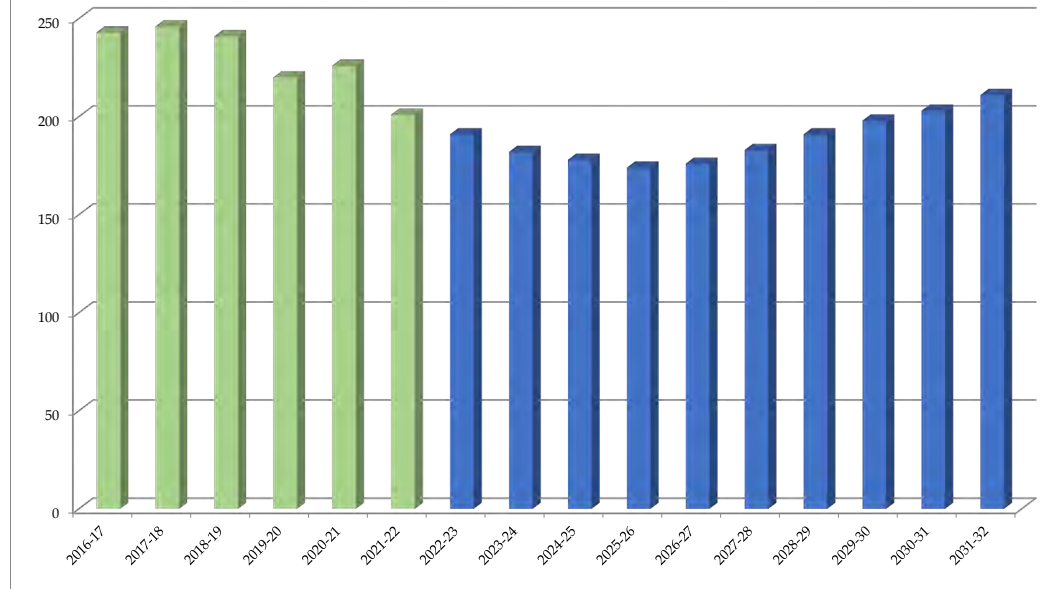
	2016-17	2017-18	2018-19	2019-20	2020-21	2021-22	2022-23	2023-24	2024-25	2025-26	2026-27	2027-28	2028-29	2029-30	2030-31	2031-32
PK	5	1	3	2	0	4	4	4	4	4	4	4	4	4	4	4
K	38	39	35	34	32	21	26	28	30	29	31	33	34	36	36	37
1	38	46	40	38	38	34	26	28	30	32	31	32	34	35	37	38
2	43	36	45	37	38	34	32	25	27	29	31	30	31	33	34	36
3	41	37	39	38	39	34	32	30	24	25	28	30	29	30	32	33
4	38	45	35	40	38	38	35	33	31	25	26	29	31	30	31	33
5	40	42	44	31	41	36	36	34	32	30	25	25	28	30	29	30
Total	243	246	241	220	226	201	191	182	178	174	176	183	191	198	203	211
Total: Elementary	243	246	241	220	226	201	191	182	178	174	176	183	191	198	203	211
Change		3	-5	-21	6	-25	-10	-9	-4	-4	2	7	8	7	5	8
Percent Change		1.2%	-2.0%	-8.7%	2.7%	-11.1%	-5.0%	-4.7%	-2.2%	-2.2%	1.1%	4.0%	4.4%	3.7%	2.5%	3.9%

Forecasts developed March 2022

Green cells (2016-2022 and earlier) are historical data

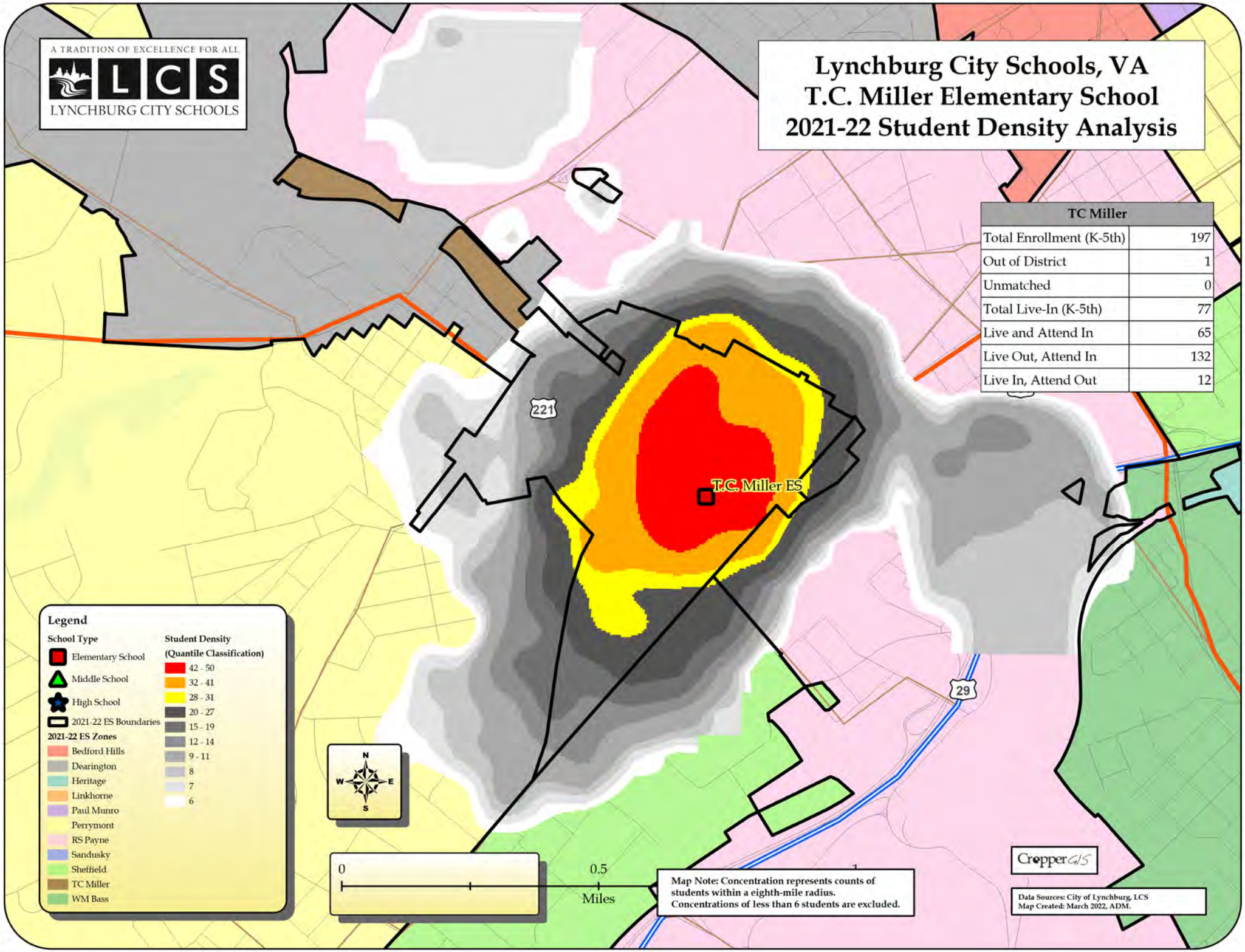
Blue cells (2022-2032 and later) are forecasted years

T. C. Miller Elementary School: PK-5 Total Enrollment



Lynchburg City Schools, VA T.C. Miller Elementary School 2021-22 Student Density Analysis

TC Miller	
Total Enrollment (K-5th)	197
Out of District	1
Unmatched	0
Total Live-In (K-5th)	77
Live and Attend In	65
Live Out, Attend In	132
Live In, Attend Out	12



Legend

School Type

- Elementary School
- Middle School
- High School

2021-22 ES Boundaries

2021-22 ES Zones

- Bedford Hills
- Dearington
- Heritage
- Linkhorne
- Paul Munro
- Perrymont
- RS Payne
- Sandusky
- Sheffield
- TC Miller
- WM Bass

Student Density (Quantile Classification)

- 42 - 50
- 32 - 41
- 28 - 31
- 20 - 27
- 15 - 19
- 12 - 14
- 9 - 11
- 8
- 7
- 6

Map Note: Concentration represents counts of students within a eighth-mile radius. Concentrations of less than 6 students are excluded.



Data Sources: City of Lynchburg, LCS
 Map Created: March 2022, ADM.

William Marvin Bass Elementary School

1730 Seabury Avenue, Lynchburg, VA 24501

2021-2022 Enrollment: 172 students
Functional Capacity: 292 students
Grades Served: Kindergarten to 5th grade

Facility Timeline:

- 1949 = Original Building
- 1963 = Classroom Addition at Rear, 3rd Floor
- 1991 = Boiler Replacement
- 1996 = Phase 1 Renovation: Windows and Exterior Doors
- 1997 = Phase 2 Renovation: 3rd Floor Doors/Finishes/Library
- 1998 = Phase 3 Renovation:
2nd Floor Doors/Finishes/Office Area
- 1999 = Phase 4 Renovation:
1st Floor
Doors/Finishes/Kitchen/Cafeteria/Elevator

Gross Area: 62,372 square feet

Acreage: 18.4

W. M. Bass Elementary is Lynchburg's only year round school and is located off of Campbell Avenue in the City's eastern part. This particular facility is somewhat unique in that it has both a gym and auditorium; something not found at most older elementary schools. This building has a lot of character with its Art Deco styling and even has hardwood flooring in some of the classroom spaces. This facility has held up well and undergone a full-building renovation that was phased over 3 years due to cost constraints. The site is large at 18 acres, though is mostly wooded. The building itself is 3-story and has recently had the roof replaced. There is ample room on site for future growth at this location.

Principal: Monica Hendricks

School Motto: Where Hope and Dreams Come True



William Marvin Bass Elementary School

Grades Served: Kindergarten to 5th grade

Specialty School: Year-round school that requires students to wear a uniform.

Total Net Area: 40,760 square feet or 65.4%
Gross Area: 62,372 square feet

Total Number of Core Classrooms: 12

Support Spaces:

- Media Center
- Gymnasium
- Auditorium with Stage
- Cafeteria

SUMMARY:

The Core Classrooms serving the grade levels are undersized and do not meet the minimums of the Virginia Department of Education. The school does not have any Extended Learning Areas for small group or individual instruction. There are numerous support personnel working out of this school that are utilizing potential instructional space. The Fine Art classrooms (Art and Music) are significantly undersized. The school is fortunate to have a Gymnasium and the Dining Room is ample in size in relation to the enrollment. Bass Elementary is one of three elementary schools that have an auditorium. The Administrative suite is undersized.

CAPACITY TO EXPAND:

Potential expansion of the classroom wings to the rear of the school is feasible. The site is large and could support the construction of a new replacement school.



William M. Bass Elementary

	2016-17	2017-18	2018-19	2019-20	2020-21	2021-22	2022-23	2023-24	2024-25	2025-26	2026-27	2027-28	2028-29	2029-30	2030-31	2031-32
PK	24	18	20	22	16	20	20	20	20	20	20	20	20	20	20	20
K	42	37	34	33	24	27	27	28	28	29	28	29	29	30	30	31
1	45	25	35	27	34	23	25	25	26	26	27	27	28	28	29	29
2	47	39	28	36	26	31	22	24	24	24	25	26	26	27	27	28
3	46	38	34	24	33	30	29	20	22	22	23	24	25	25	26	26
4	40	42	46	33	30	32	31	30	21	23	24	25	26	27	27	28
5	39	39	39	42	34	23	31	30	29	20	22	23	24	25	26	26
Total	283	238	236	217	197	186	185	177	170	164	169	174	178	182	185	188

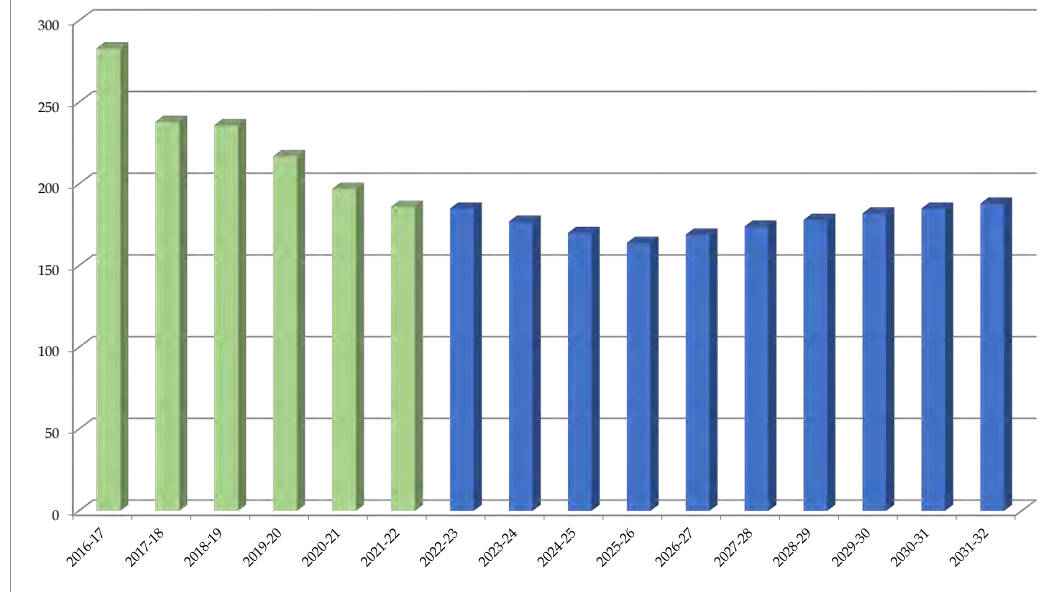
Total: Elementary	283	238	236	217	197	186	185	177	170	164	169	174	178	182	185	188
Change		-45	-2	-19	-20	-11	-1	-8	-7	-6	5	5	4	4	3	3
Percent Change		-15.9%	-0.8%	-8.1%	-9.2%	-5.6%	-0.5%	-4.3%	-4.0%	-3.5%	3.0%	3.0%	2.3%	2.2%	1.6%	1.6%

Forecasts developed March 2022

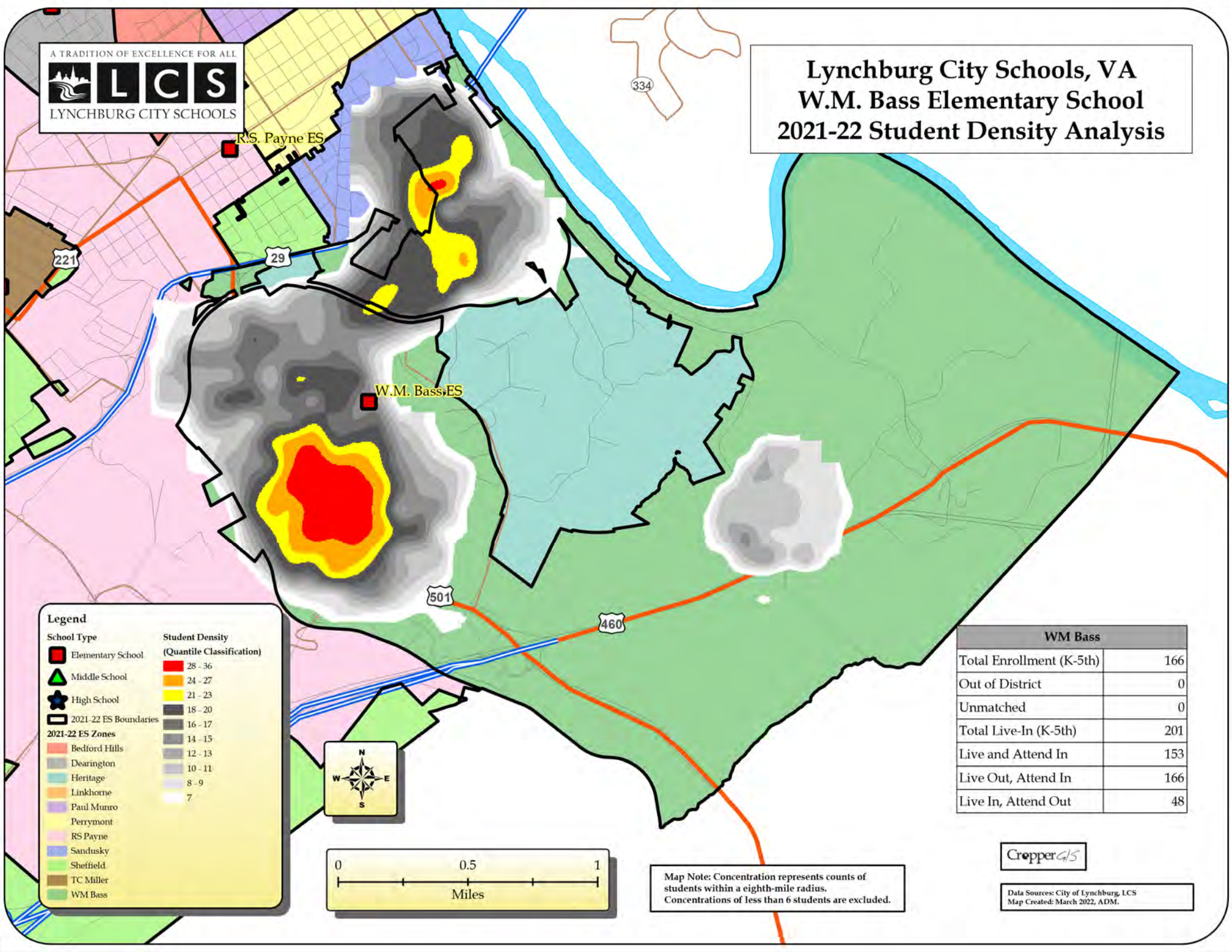
Green cells (2021-2022 and earlier) are historical data

Blue cells (2022-2023 and later) are forecasted years

William M. Bass Elementary School: PK-5 Total Enrollment



Lynchburg City Schools, VA W.M. Bass Elementary School 2021-22 Student Density Analysis



Legend

School Type

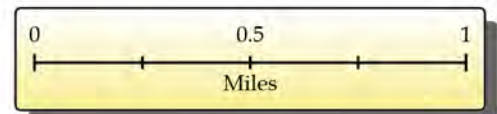
- Elementary School
- ▲ Middle School
- ★ High School
- 2021-22 ES Boundaries

2021-22 ES Zones

- Bedford Hills
- Dearington
- Heritage
- Linkhorne
- Paul Munro
- Perrymont
- RS Payne
- Sandusky
- Sheffield
- TC Miller
- WM Bass

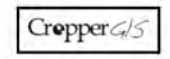
Student Density (Quantile Classification)

- 28 - 36
- 24 - 27
- 21 - 23
- 18 - 20
- 16 - 17
- 14 - 15
- 12 - 13
- 10 - 11
- 8 - 9
- 7



WM Bass	
Total Enrollment (K-5th)	166
Out of District	0
Unmatched	0
Total Live-In (K-5th)	201
Live and Attend In	153
Live Out, Attend In	166
Live In, Attend Out	48

Map Note: Concentration represents counts of students within a eighth-mile radius. Concentrations of less than 6 students are excluded.



Data Sources: City of Lynchburg, LCS
 Map Created: March 2022, ADM.

Sheffield Elementary School

115 Kenwood Place, Lynchburg, VA 24502

Current Enrollment: 417 students
Functional Capacity: 526 students
Grades Served: Kindergarten to 5th grade

Facility Timeline:

1960 = Original Building
2000 = Renovation / Addition
2013 = Partial Reroof (Original Building)
2019 = Gym Addition
2021 = Reroof of 2000 Addition

Gross Area: 58,710 square feet

Acreage: 10.0



Sheffield Elementary is the Division's most recent, fully renovated elementary school and is located within the Sheffield neighborhood, which is in the large triangle of land formed by Fort Avenue, Wards Road and the Lynchburg Expressway. An addition was also constructed during the renovation to increase the capacity of this facility and added classrooms. The roof has been recently replaced and a new gymnasium was constructed in 2019, alleviating the challenges of serving lunch and holding movement education classes within the same space at the same time. Sheffield also has mobile units which are located in the northern parking lot and house a division wide program for elementary students.

Principal: Lisa Lee



Sheffield Elementary School

Grades Served: Kindergarten to 5th grade

Specialty School: No

Total Net Area: 46,070 square feet or 78.6%

Gross Area: 58,640 square feet

Total Number of Core Classrooms: 23

Support Spaces:

- Media Center
- Gymnasium
- Cafeteria with Stage

SUMMARY:

The school was renovated and expanded in 2000. Classrooms were reconfigured to the correct size, the main entrance and Administrative suite were relocated, and the Media Center was expanded. A freestanding Gymnasium was recently added. The school does not have any Extended Learning Areas. The Cafeteria has a stage. The school has a fully functioning Kitchen. The Fine Art classrooms (Art and Music) are significantly undersized. In summary, Sheffield and Bedford Hills Elementary most closely resemble a contemporary elementary school since they have had the most complete renovation.

CAPACITY TO EXPAND:

The school is utilizing all of the buildable area on the site. The modular building s not associated with this school should be removed to open up additional parking.



Sheffield Elementary

	2016-17	2017-18	2018-19	2019-20	2020-21	2021-22	2022-23	2023-24	2024-25	2025-26	2026-27	2027-28	2028-29	2029-30	2030-31	2031-32
PK	50	27	16	23	37	34	34	34	34	34	34	34	34	34	34	34
K	82	70	51	86	69	76	77	77	78	78	78	79	80	81	83	82
1	64	72	66	67	82	65	73	74	74	75	75	76	77	78	79	81
2	81	65	66	66	54	76	61	69	70	70	71	71	72	73	75	76
3	59	67	61	64	62	55	72	58	66	67	67	68	68	69	71	73
4	63	60	59	66	63	67	56	73	59	67	68	68	69	69	70	72
5	53	55	59	60	57	69	64	54	70	57	65	66	66	67	68	69
Total	452	416	378	432	424	442	437	439	451	448	458	462	466	471	480	487

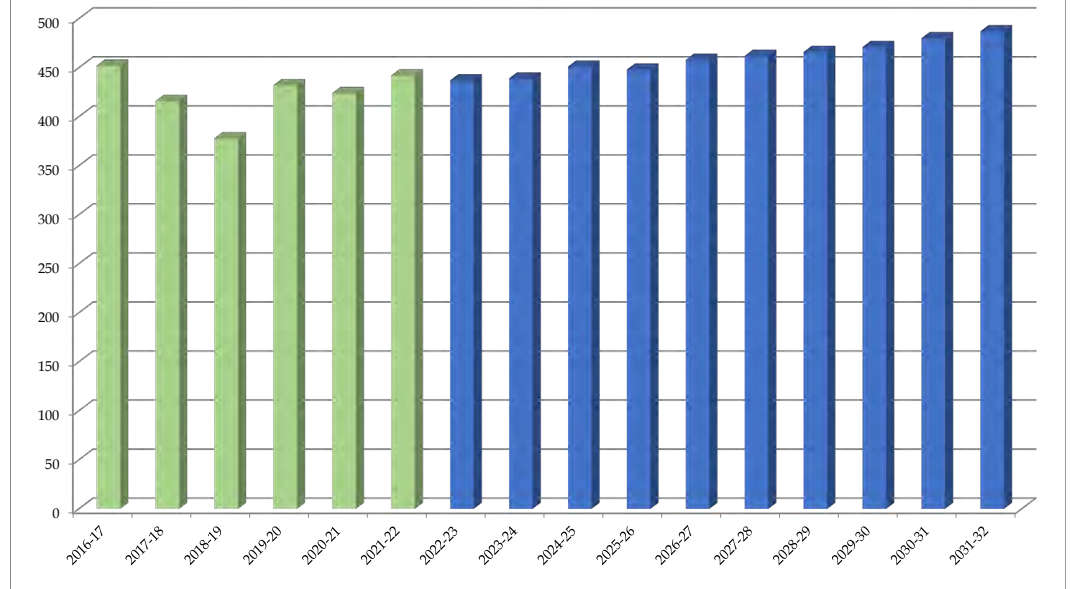
Total: Elementary	452	416	378	432	424	442	437	439	451	448	458	462	466	471	480	487
Change		-36	-38	54	-8	18	-5	2	12	-3	10	4	4	5	9	7
Percent Change		-8.0%	-9.1%	14.3%	-1.9%	4.2%	-1.1%	0.5%	2.7%	-0.7%	2.2%	0.9%	0.9%	1.1%	1.9%	1.5%

Forecasts developed March 2022

Green cells (2016-2021 and earlier) are historical data

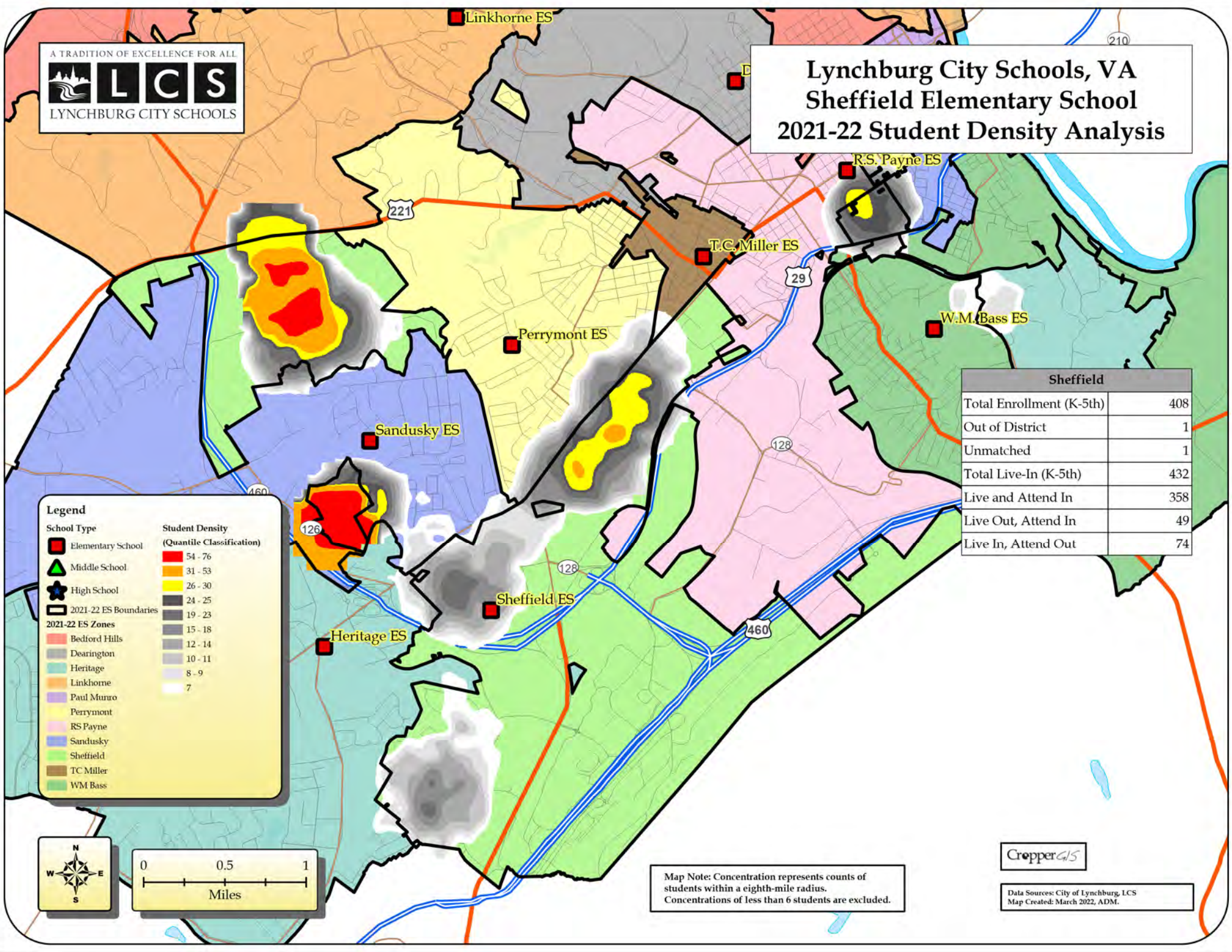
Blue cells (2022-2032 and later) are forecasted years

Sheffield Elementary School: PK-5 Total Enrollment





Lynchburg City Schools, VA Sheffield Elementary School 2021-22 Student Density Analysis



Legend

School Type

- Elementary School
- Middle School
- High School

2021-22 ES Boundaries

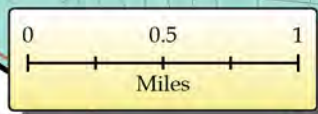
2021-22 ES Zones

- Bedford Hills
- Dearington
- Heritage
- Linkhorne
- Paul Munro
- Perrymont
- RS Payne
- Sandusky
- Sheffield
- TC Miller
- WM Bass

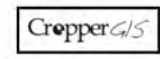
Student Density (Quantile Classification)

- 54 - 76
- 31 - 53
- 26 - 30
- 24 - 25
- 19 - 23
- 15 - 18
- 12 - 14
- 10 - 11
- 8 - 9
- 7

Sheffield	
Total Enrollment (K-5th)	408
Out of District	1
Unmatched	1
Total Live-In (K-5th)	432
Live and Attend In	358
Live Out, Attend In	49
Live In, Attend Out	74



Map Note: Concentration represents counts of students within a eighth-mile radius. Concentrations of less than 6 students are excluded.



Data Sources: City of Lynchburg, LCS
Map Created: March 2022, ADM.



7:20 – 7:25 PM

Brief Report Out





7:25 – 7:30 PM

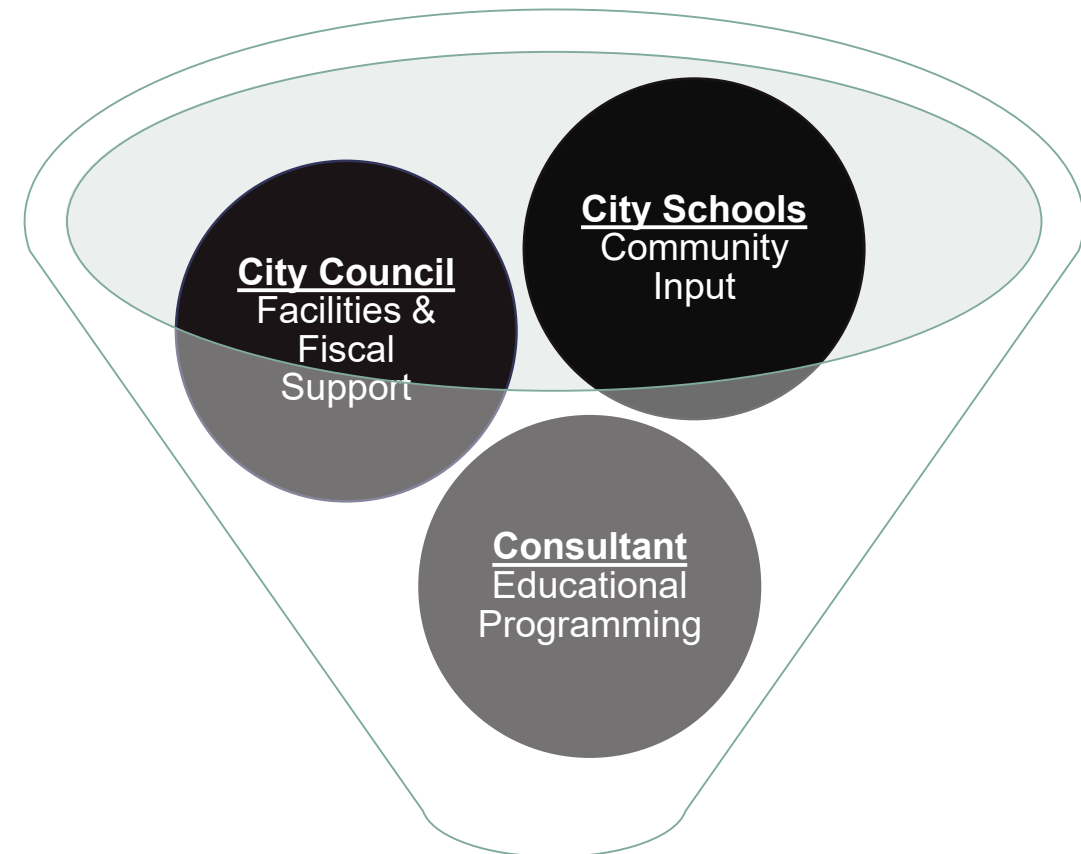
Next Steps

Facilities Considerations

- New Construction
- New Addition
- Renovation & Maintenance
- Safety & Security
- Accessibility
- Attendance Zones

Program Considerations

- PreK & Early Childhood
- Schools for Innovation
- Gifted Opportunities Center
- Year-Round School
- Alternative Schools
- Virtual School
- Career & Technical Education
- Fine & Performing Arts Programs

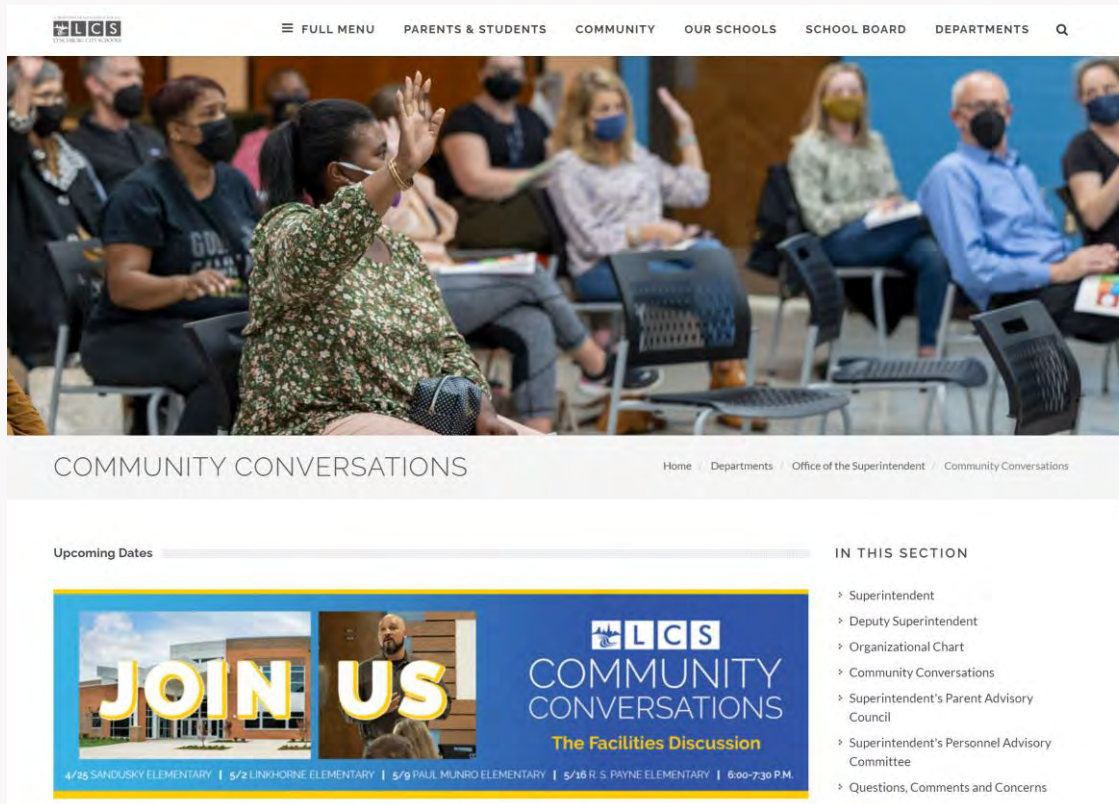


Three Potential Options For Consideration



7:25 – 7:30 PM

Next Steps



Next Steps

1. Share info on LCS Website
2. Continue Community Conversations
3. Form an oversight committee
4. Hire an educational programming consultant
5. Complete analyses of three options
6. Select an option (School Board & City Council)
7. Develop a multiphase plan
8. Begin implementing first phases of the plan (earliest Fall 2023)

<https://www.lcsedu.net/>



7:20 – 7:25 PM

Thank You & Good Night

Thanks for investing in my future!

